



LEGACY
HOTEL & RESIDENCES



Introducing
LEGACY
HOTEL & RESIDENCES

Secure your legacy for generations to come.

LEGACY
MIAMI



ARTIST CONCEPTUAL RENDERING. DEVELOPER MAY CHANGE WITHOUT NOTICE.



This is where events
happen in the sky,
your swim is in the air,
deals get done and
health is your new wealth.

Legacy is both luxury hotel
and residential tower featuring
278 branded residences sitting
above a 255 room hotel.

Just a short distance from
Brickell, South Beach,
Wynwood, Design District
and Little Havana, Miami
Worldcenter truly puts you
at the center of it all.

Legacy Hotel will be one of
downtown Miami's only luxury
hotels. Within a master plan
that includes a convention
center, entertainment,
restaurants and high-end retail,
all helping to drive reservation
demand year round.



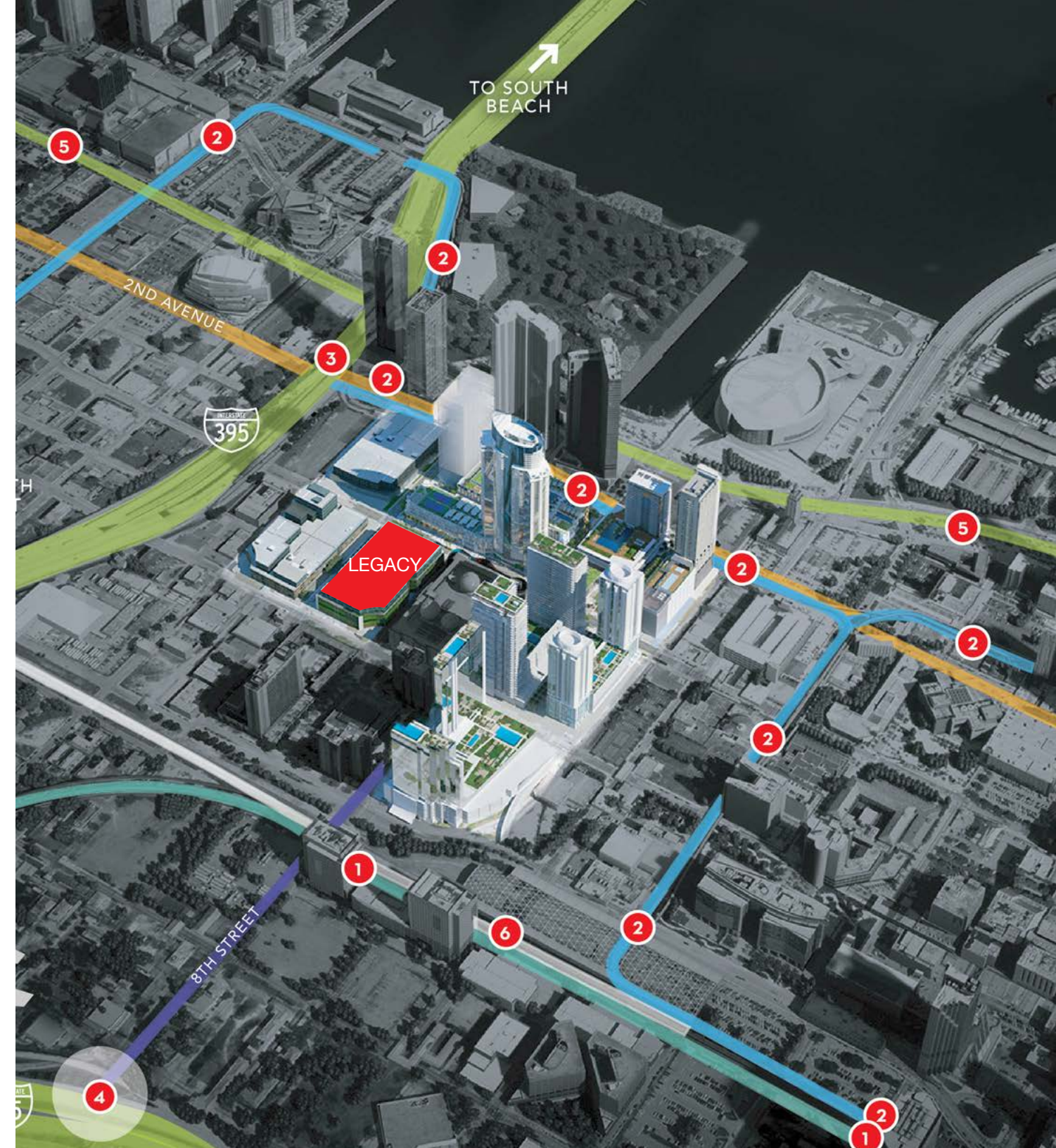


LEGACY PROVIDES UNMATCHED ACCESSIBILITY

150 MILLION TRANSIT TRIPS

CONVENIENTLY LOCATED NEXT TO I-95 AND I-395

- Virgin MiamiCentral Station -- New trains transporting visitors from Miami to Orlando in three hours with expansion coming
- Metrorail and Metromover stations
- Minutes from the Miami International Airport
- Thousands of new parking spaces giving visitors to nearby attractions a convenient place to park.



- 1 MetroRail Line + Station
- 22.5 million riders annually
- 2 MetroMover + Station
- 10 million riders annually
- 3 stops directly at MWC site
- 3 I-395 + 2nd Avenue
- 43 million vehicles annually
- 117,500 vehicles daily
- 4 I-95 + 8th Street
- 55 million vehicles annually
- 152,500 vehicles daily
- 5 Biscayne Boulevard
- 15 million vehicles annually
- 6 All Aboard Florida - Virgin Trains
- 10 million projected visitors

LEGACY

WORLD PROMENADE

Regional Fashion Retailers
Anchored by Regional and Local
High-end Restaurants

ENTERTAINMENT HUB

90,000 sq. ft. World Class
Entertainment including a Food Hall,
Experience Oriented Activities and a
Citizen M Hotel

WORLD SQUARE

The Heart of Miami Worldcenter
used for Community Gatherings,
Open Markets and Concerts

ROOFTOP RESTAURANT

Exciting Chef Driven &
Best in Class Restaurants

7TH ST. PROMENADE

Daily Necessities: Hair Salon, Nail
Bar, Coffee Shops, Ice Cream Shops,
Banks, and Corner Restaurant.

MARRIOTT MARQUIS HOTEL AND CONVENTION CENTER

600,000 sq. ft. of Convention Space
1,800 Luxury Hotel Rooms

VIRGIN TRAINS

Express Passenger Rail Service
between Miami, Fort Lauderdale,
West Palm Beach and Orlando. (2022)

MIAMI WORLD CENTER

WORLD PROMENADE // FASHION CORE

ENTERTAINMENT HUB // FOOD HALL

ROOFTOP RESTAURANT

LEGACY

WORLD SQUARE

7TH ST. PROMENADE // DAILY NECESSITIES

MARRIOTT HOTEL &
CONVENTION CENTER

VIRGIN TRAINS

ARTIST CONCEPTUAL RENDERING. DEVELOPER MAY CHANGE WITHOUT NOTICE.

DISCOVER *DOWNTOWN MIAMI*

1 MUSEUM PARK

Breathtaking views of the Biscayne Bay and the glittering Miami skyline around, it is a gorgeous undulating green expanse of 30 acres. The park is home to the Phillip and Patricia Frost Museum of Science and its waterfront treasure - Perez Art Museum Miami.

2 AMERICAN AIRLINES ARENA

The 20,000-seat American Airlines Arena, home to the NBA Miami Heat, is nestled on the majestic Biscayne Bay. Besides its sports accommodation, American Airlines Arena hosts world-class concerts and shows, from Adele to Jennifer Lopez.

3 ADRIENNE ARSHT CENTER

The Adrienne Arsht Center, designed by world-renowned architect Cesar Pelli, is one of the most important performing arts venues, with two major single-purpose halls created to present the finest in classical and popular entertainment, from 'Hamilton' to 'Don Quixote'.

4 MIAMI WORLDCENTER

Miami Worldcenter is stated to be a magnetic destination for tourists and business visitors in the heart of Downtown. This is the biggest mixed-use development in the U.S. after New York's Hudson Yards.



CHANGING RESIDENTIAL HOSPITALITY FOREVER.



FIRST OF ITS KIND ROOFTOP ATRIUM

1



THE ONLY INTERNATIONAL BUSINESS LOUNGES

2



THE FUTURE OF WELLNESS & MEDICINE

3



OUR EXCLUSIVE **MICROLUXE**® ROOM DESIGN

4

This is the new luxury.

ARTIST CONCEPTUAL RENDERINGS. DEVELOPER MAY CHANGE WITHOUT NOTICE.

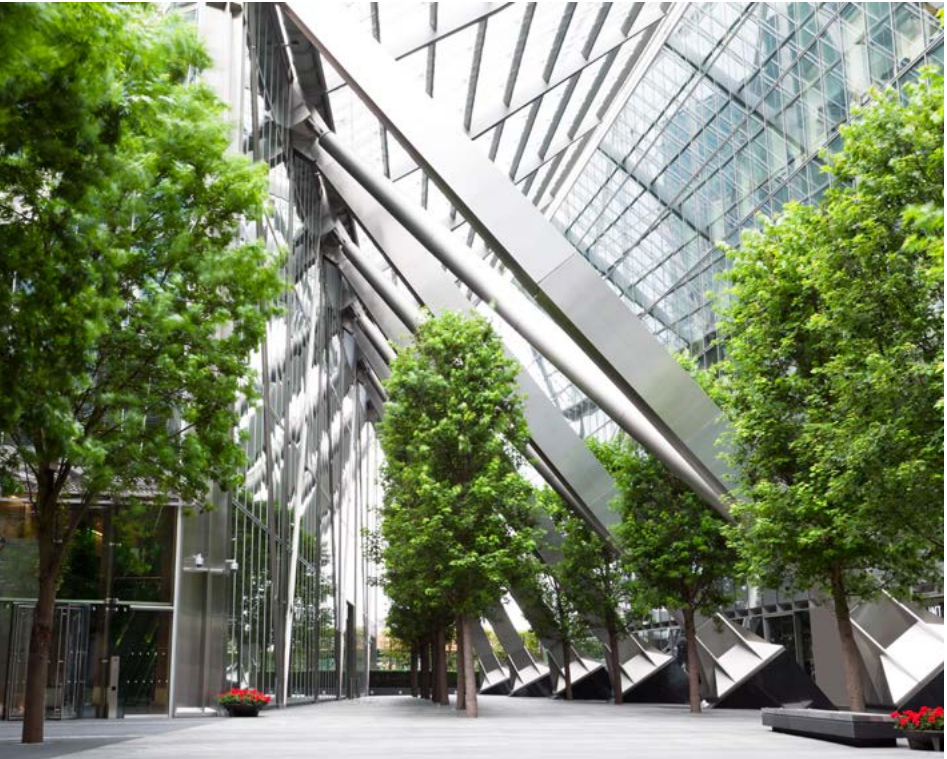
ROOFTOP **ATRIUM** EVENT SPACE AND PLAYGROUND

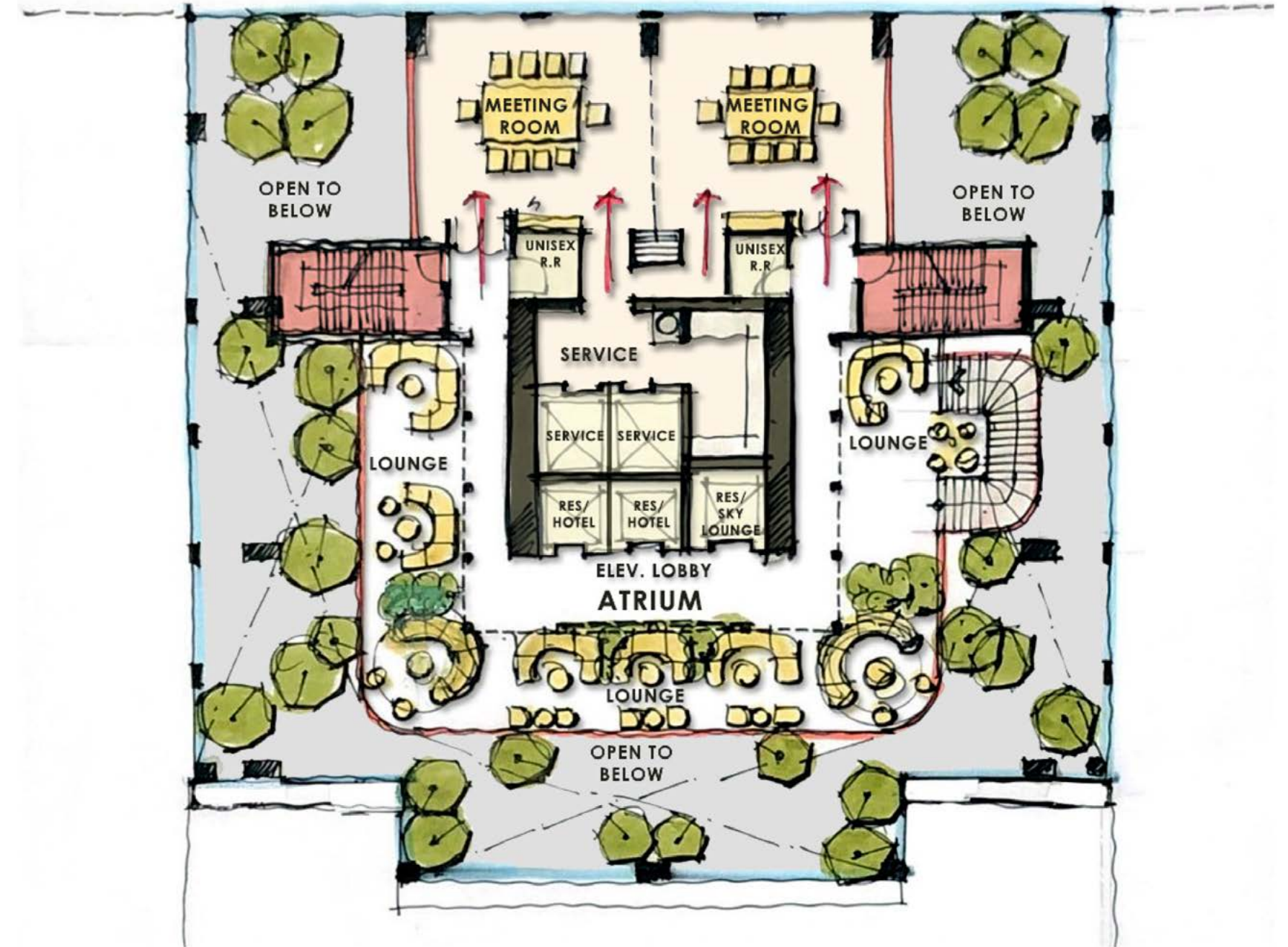
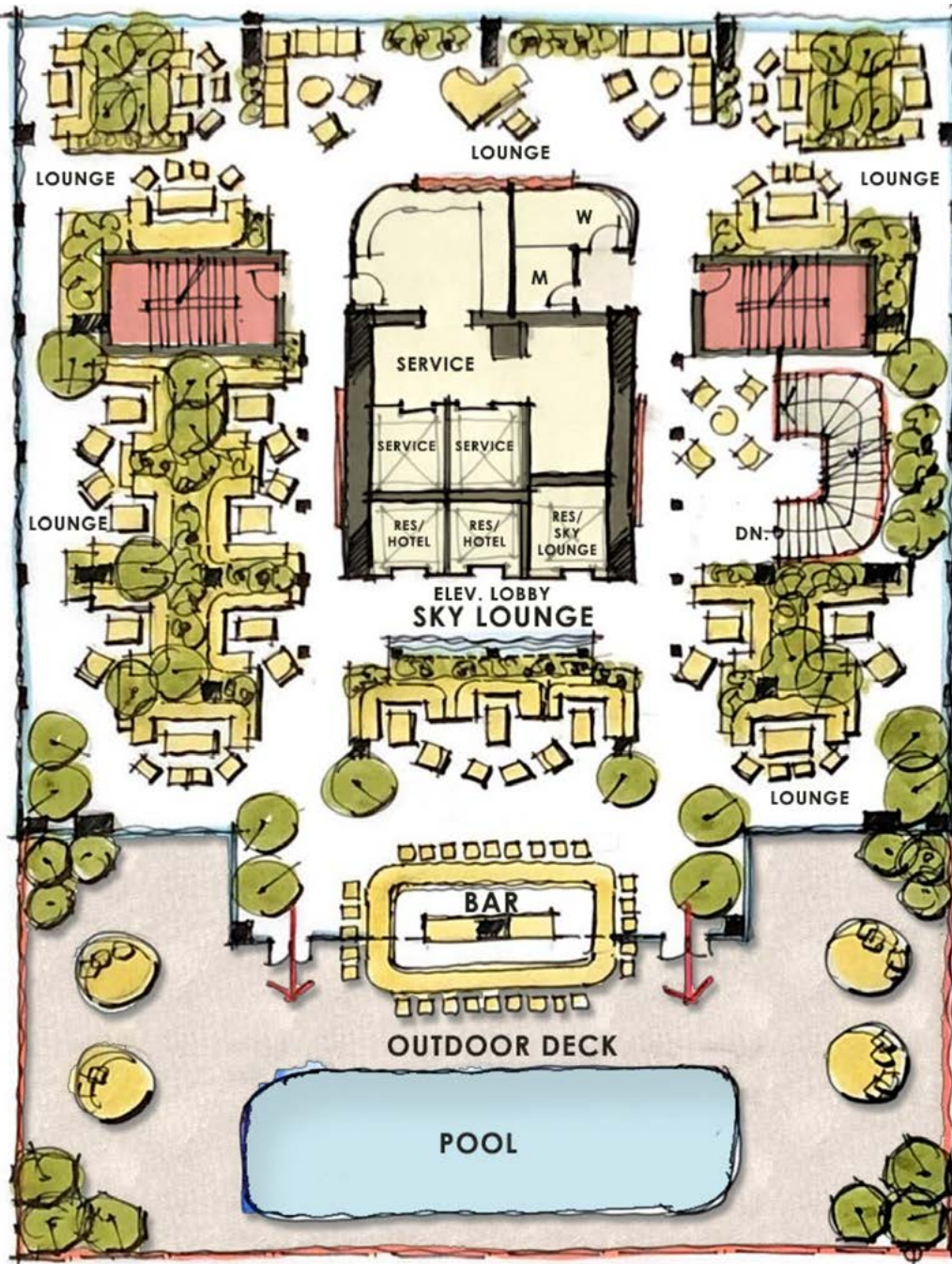
The Atrium is an intimate place for residents and the ultimate public/private space in Miami. Friends, family and co-workers will host their most prestigious events in this city here. The Atrium is Miami's first fully enclosed glass rooftop that gives event-planners the perfect space to plan with its soaring views of downtown, cantilevered glass pool hanging off the edge of the space, air conditioning and of course protection from any rain. No need for contingencies here.

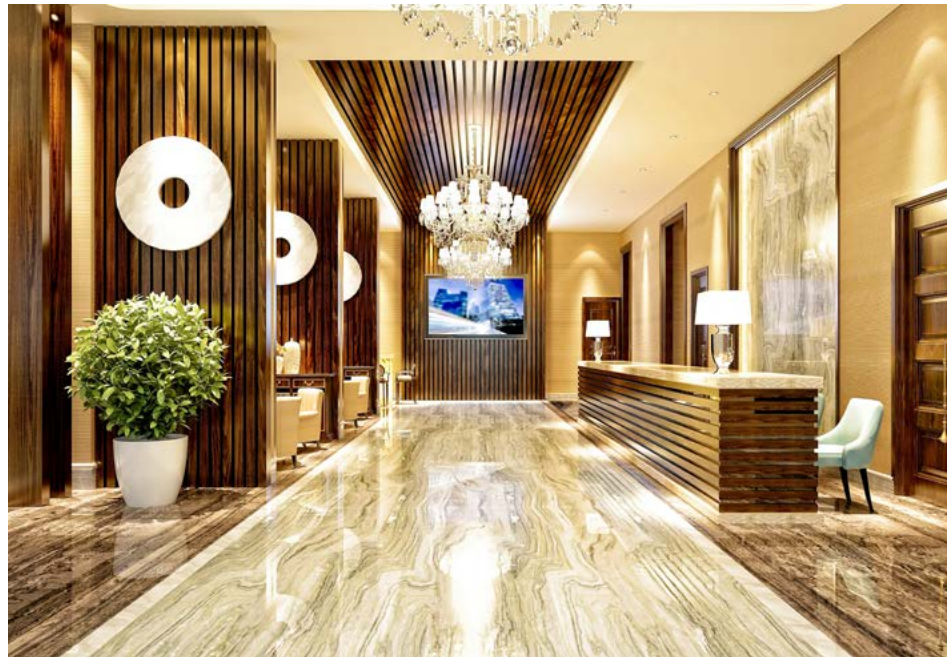
The rest of Miami will immerse itself into our SkyBar with endless sunsets, cocktails and lite bites as you converse with acquaintances. *This is the first Atrium of its kind in Miami.*



ARTIST CONCEPTUAL RENDERINGS. DEVELOPER MAY CHANGE WITHOUT NOTICE.







Introducing Miami's first INTERNATIONAL BUSINESS LOUNGE

The International business lounge is a timeless and tailored setting for intimate social and business experiences.

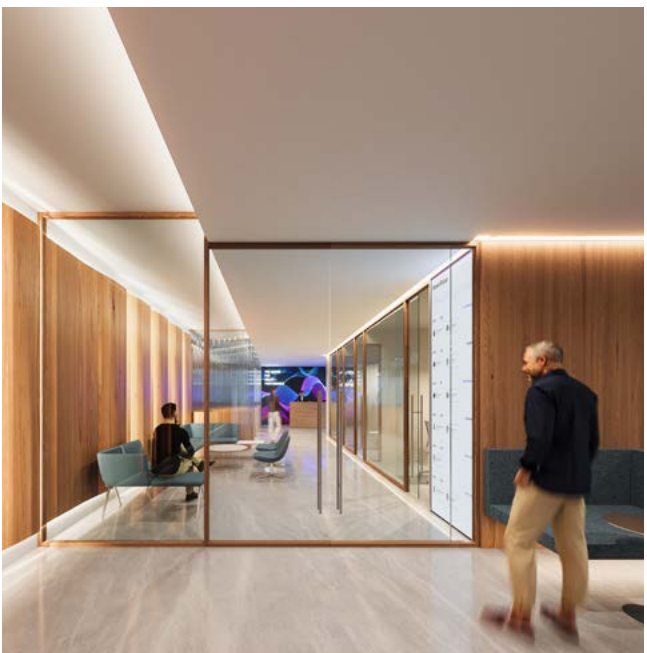
A place guests can relax over the perfect cup of coffee and face to face talk about important things with no distractions.

It is a rare delight and a place designed to be where deals to get done.

IBL

HEALTH IS THE NEW WEALTH

Our VIP medical and wellness center is designed to diagnose your health. Using technology and expertise, the future of understanding the things that matter most both in body and mind will be displayed on a dashboard before you with protocols you can perfect yourself with. Like never before you will have unparalleled access to the best practitioners and technology in the areas of health, wellness, beauty and longevity. From herbal baristas to IV solutions and hormone balancing, you can soon experience the ultimate version of you. *Own where the first downtown longevity, vitality and surgical center in Miami lives.*



ARTIST CONCEPTUAL RENDERINGS. DEVELOPER MAY CHANGE WITHOUT NOTICE.



MICROLUXE®

ROOM DESIGN

Legacy Hotels & Residences will exist at the confluence of elegance and functionality. State-of-the-art digital resources and ergonomic integration will be woven into living spaces that marry a refined quality of life with commercial practicality and ease of ownership. Every innovation is intended to help guests simplify, streamline, and personalize their stay while enhancing our buyer experience as well.

Legacy Hotels & Residences is developing a technology-driven approach to real-time communication and connectivity for both guests and owners. Everyone will be just a click away from a reservation, concierge, check-in arrival and much more.

Legacy is the first high-end, high-touch hotel and residence experience that incorporates a holistic lifestyle and guest experience that energizes the mind and calms the spirit.



ARTIST CONCEPTUAL RENDERINGS. DEVELOPER MAY CHANGE WITHOUT NOTICE.

EVERYTHING HAS ITS PLACE

BESPOKE RESIDENCE INTERIORS THAT ARE LARGER AND COME WITH KITCHENS AS WELL AS WASHER/DRYER COMBINATIONS



ARTIST CONCEPTUAL RENDERINGS. DEVELOPER MAY CHANGE WITHOUT NOTICE.

COMPLIMENTARY AND **NOT COMPETITIVE** WITH HOTEL ROOMS BELOW

BESPOKE RESIDENCE INTERIORS THAT ARE LARGER AND COME WITH KITCHENS AS WELL AS WASHER/DRYER COMBINATIONS

COMPLIMENTARY AND **NOT COMPETITIVE** WITH HOTEL ROOMS BELOW



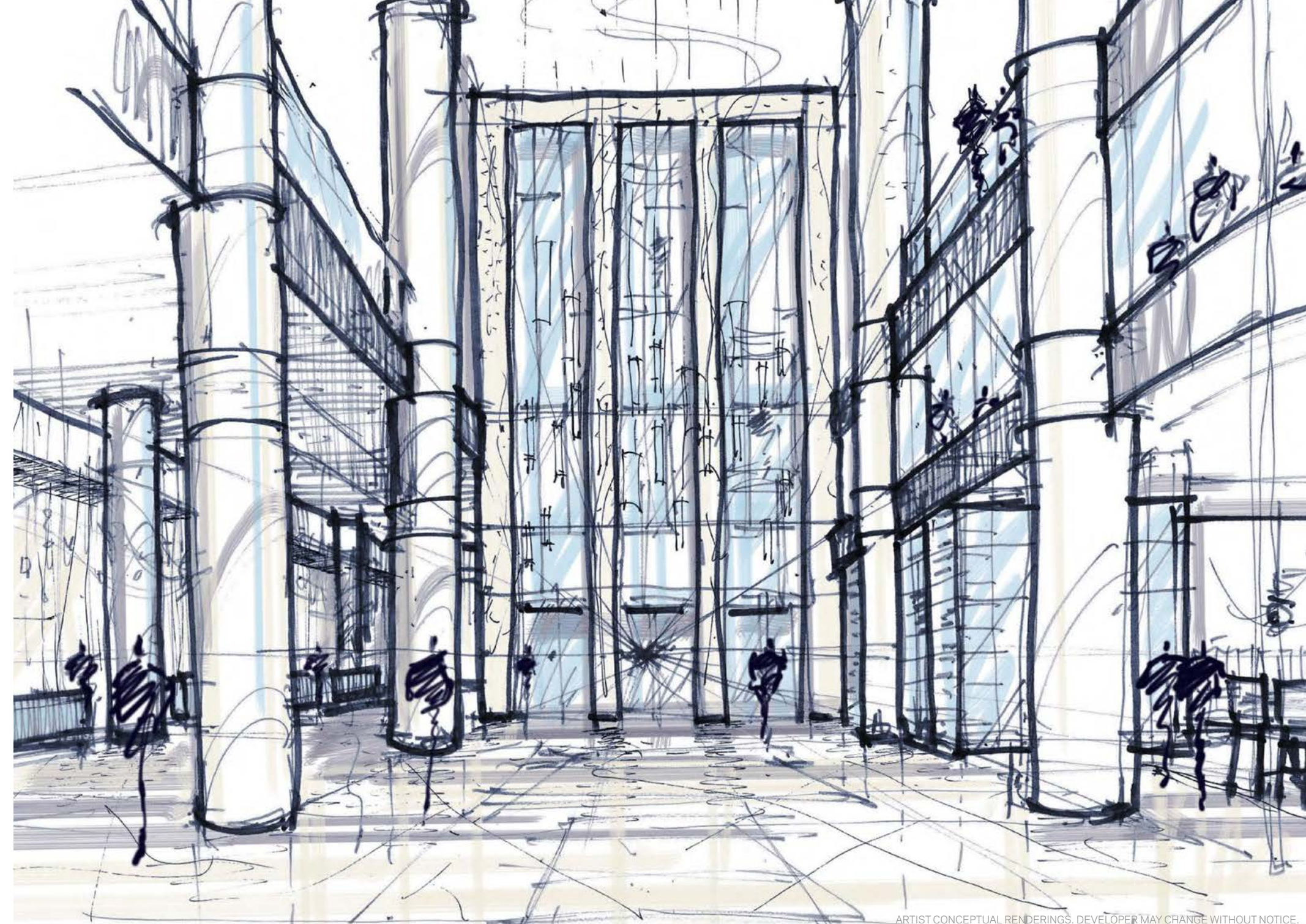
ARTIST CONCEPTUAL RENDERINGS. DEVELOPER MAY CHANGE WITHOUT NOTICE.



THE LEGACY EXPERIENCE

Exemplified by extraordinary comfort with an unrivaled level of service and innovation.

Legacy can be a memorable escape or meaningful destination.



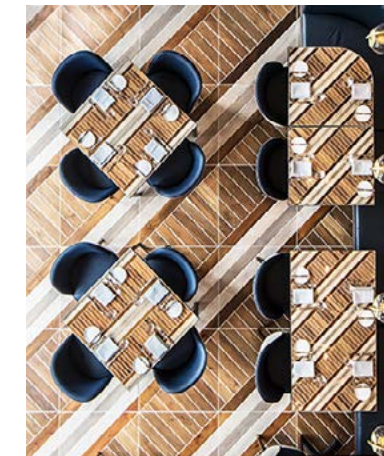
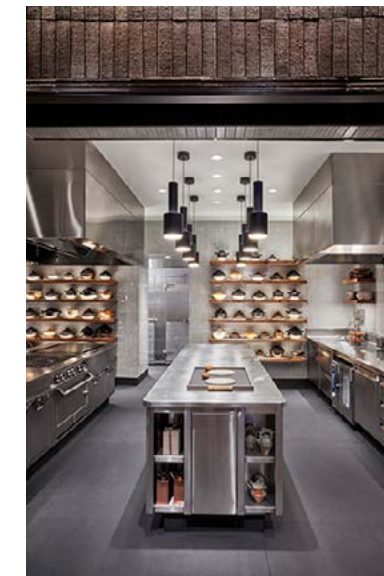
ARTIST CONCEPTUAL RENDERINGS. DEVELOPER MAY CHANGE WITHOUT NOTICE.



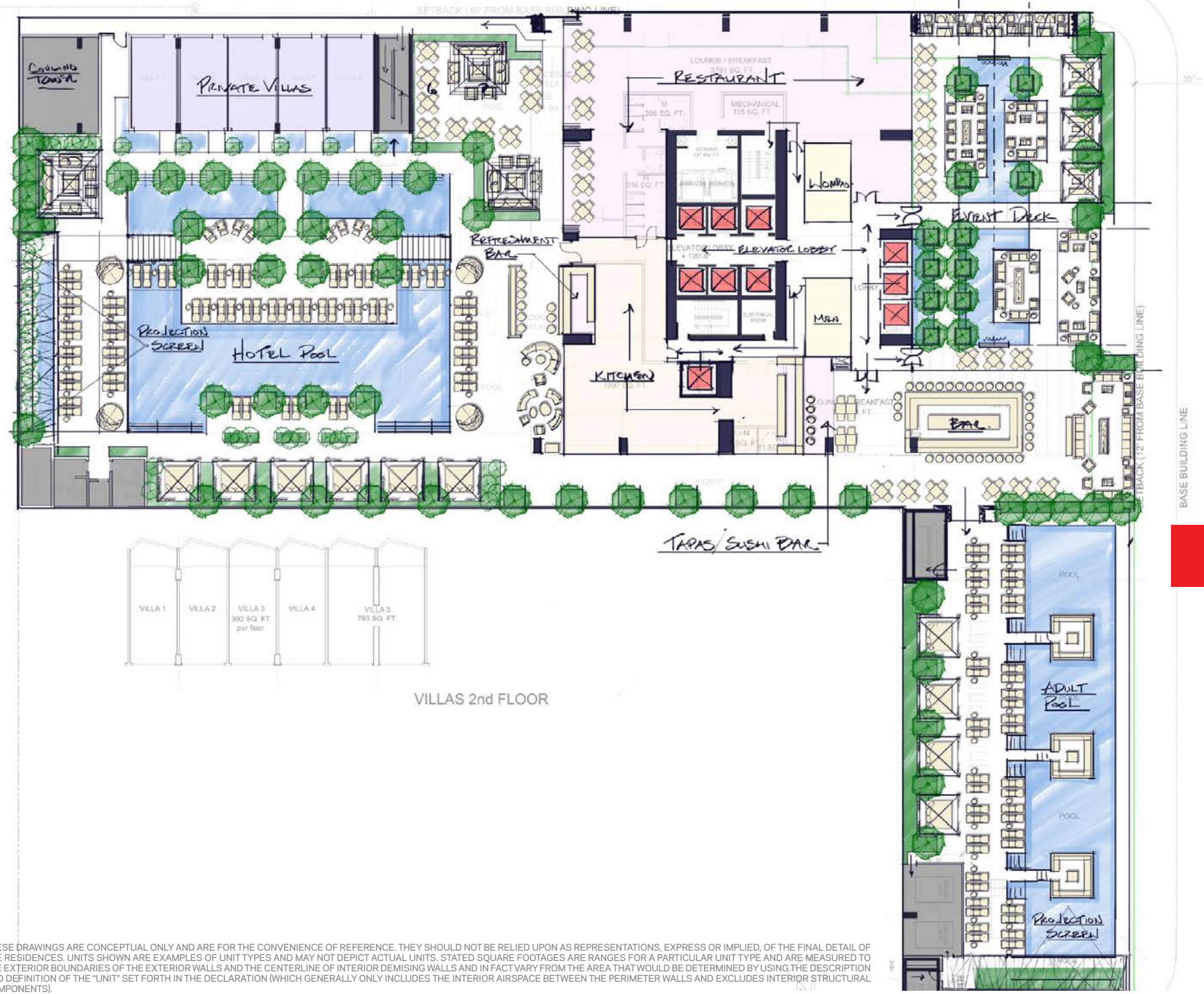
WE HAVE 5 DIFFERENT TYPES OF ICE

This goes way beyond food and restaurants. Types and shapes of ice generally sounds unimportant but in fact it speaks to the attention to detail a hotel and residence experience will offer. Legacy Hotel in downtown Miami will have superior offerings whether you are in the International Business Lounge, our 1-acre urban pool, rooftop atrium, signature restaurant or in-room.

Raising the bar is an understatement.



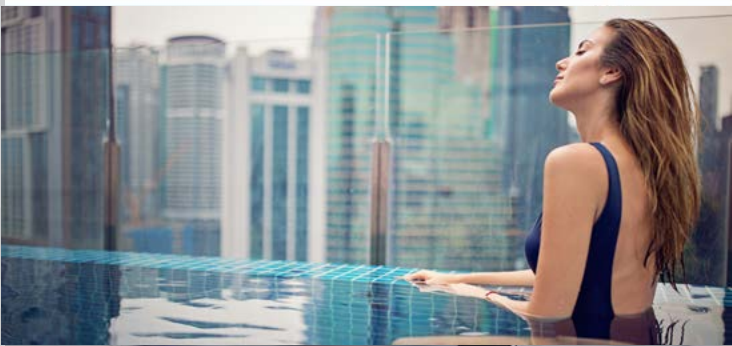
ARTIST CONCEPTUAL RENDERINGS. DEVELOPER MAY CHANGE WITHOUT NOTICE.



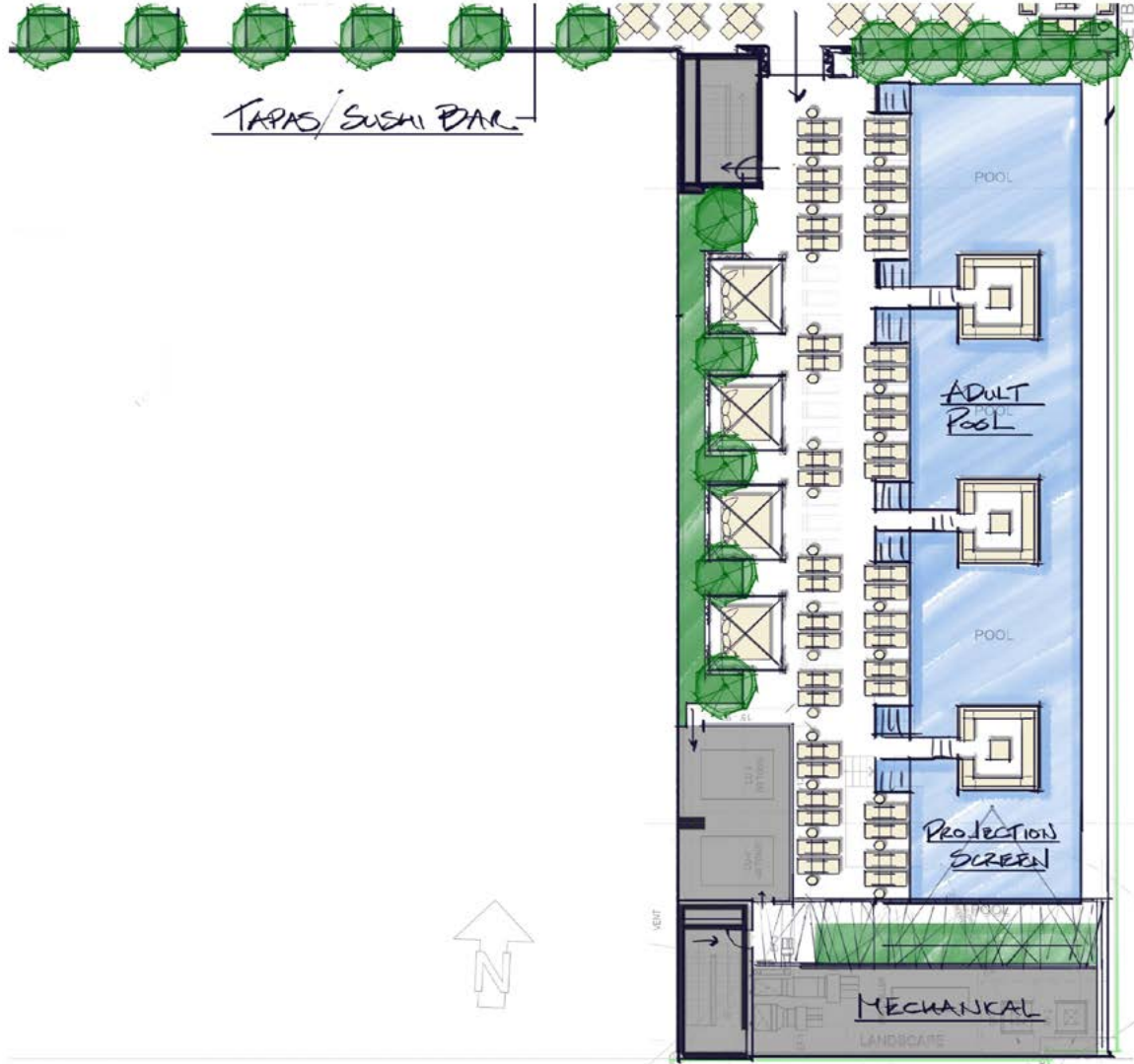
THE LARGEST URBAN HOTEL POOL IN MIAMI



ANYTHING BUT ORDINARY



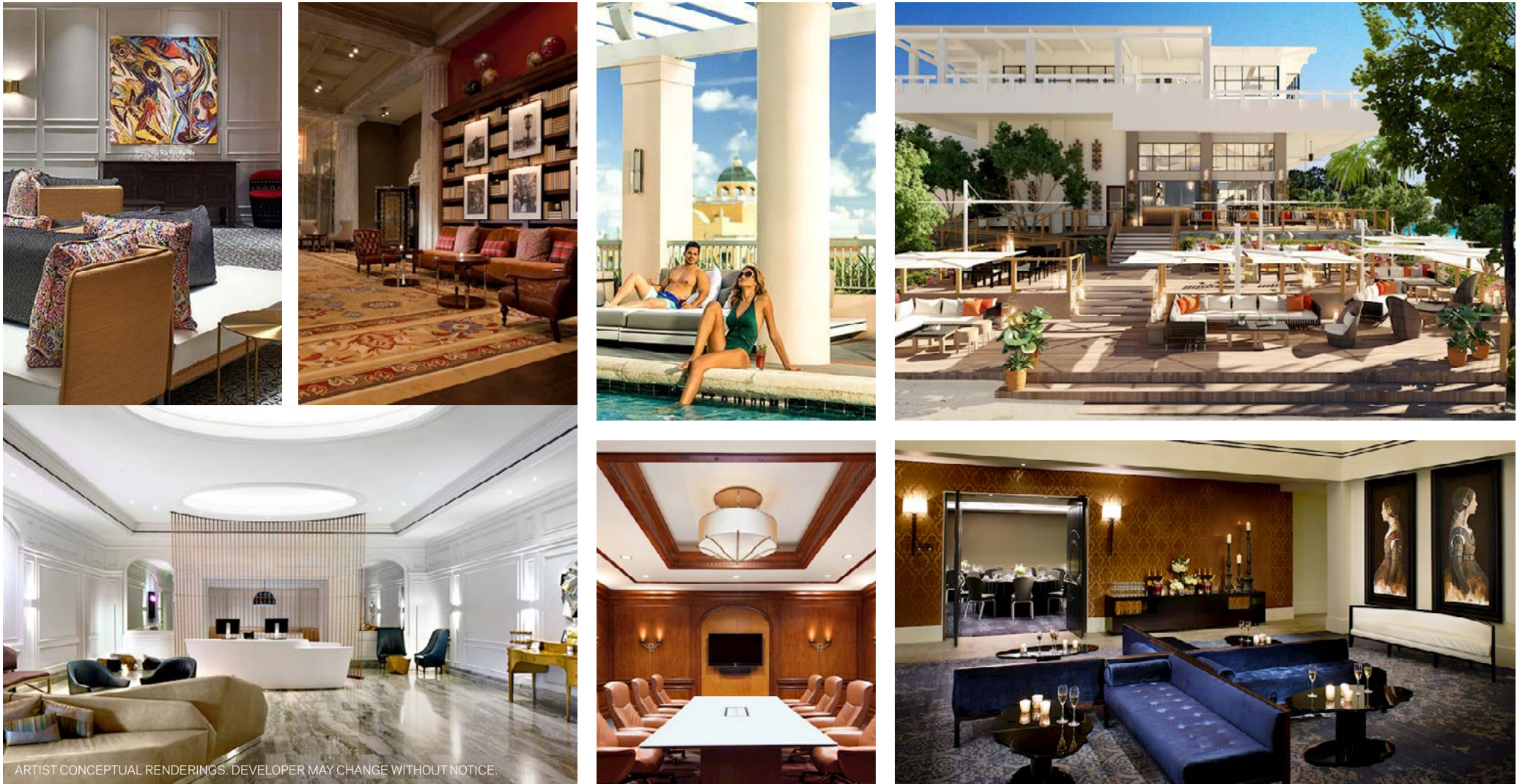
3 Unique Aquatic Experiences





WORLD-CLASS HOSPITALITY MANAGEMENT COMES FROM *EXPERIENCE*

A remarkable thing happens when you bring people together who are driven by a common goal and personal passion to make a difference-they do. Every team member at Pivot Hotels & Resorts is united behind a singular vision: Delivering hospitality and creating value for every customer, every time. To date there are 33 luxury hotels managed throughout the United States.



ASK US HOW WE ARE PUTTING OUR MONEY WHERE OUR MOUTH IS.



2

IF YOU PREFER SELF MANAGEMENT, THEN WHY LIMIT
YOURSELF TO ONE WHEN
YOU CAN **HAVE THEM ALL**

Enjoy the freedom of ownership - the way you like.

GET *TURBO* *CHARGED*

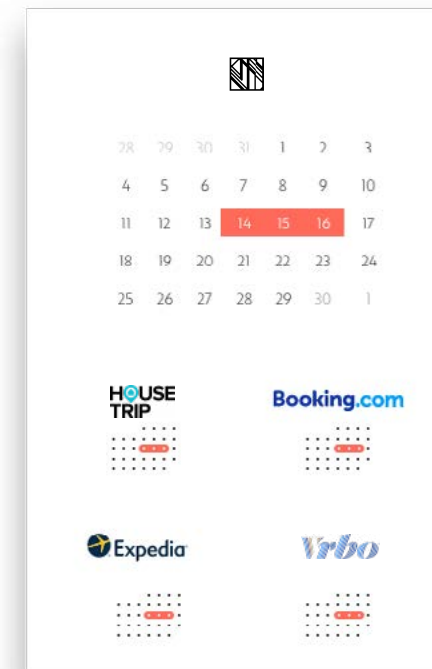
OneFineStay 1
Airbnb 2
VRbO 3
TripAdvisor 4
Booking.com 5
Home Away 6
Flipkey 7
HomeStay 8
House Sitting 9
Villas Direct 10
VacationRentals.com 11

Wimdu 12
Interhome 13
ExecuStay 14
Perfect Places That Come 15
VacationRentals.com 16
Turnkey 17
Roomarama 18
Hotels.com 19
HouseTrip 20
BedYCasa 21
RoomKey 22

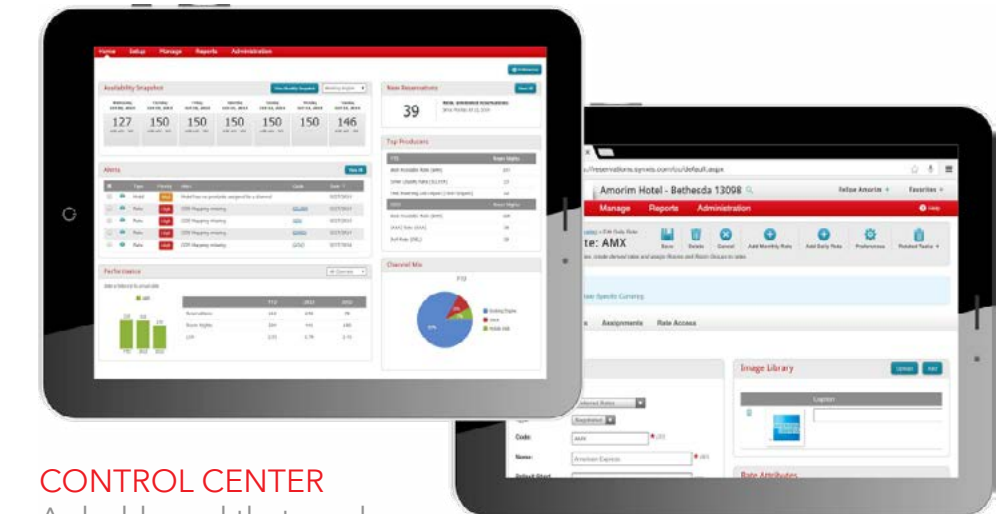
ThirdHome 23
Expedia 24
9Flats 25
Priceline 26
Orbitz 27
Trivago 28
LateRooms.com 29
Hotwire 30
Kayak 31
Travelocity 32
LastMinute.com 33
Agoda 34
Splendia 35
and many more...

Your Legacy Reservations and rentals can all be controlled electronically utilizing our third party tools and a proprietary system Legacy Hotels and Resorts is developing. Whether you choose our hotel brand to give you seamless control without any hassle or chose to manage things yourself you are always in control from anywhere you are.

SIMPLE MATH AND TIMING
THAT MAKE SENSE



CHANNEL MANAGEMENT
Software allows all your reservation platforms to be up-to-date with all other reservations so you can avoid duplicate bookings and plan your perfect vacation when you want.

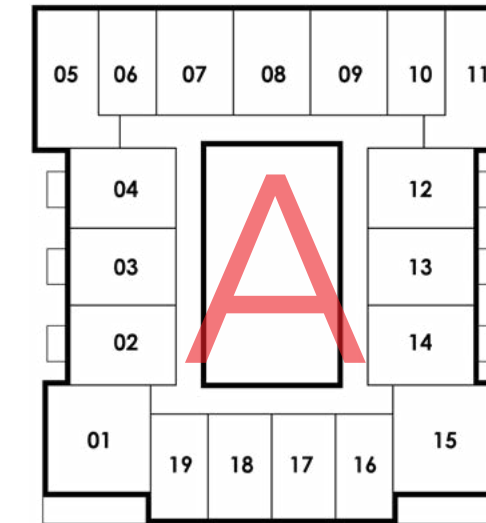


CONTROL CENTER
A dashboard that can be viewed on your mobile devices to see your asset performance and revenue at any time.

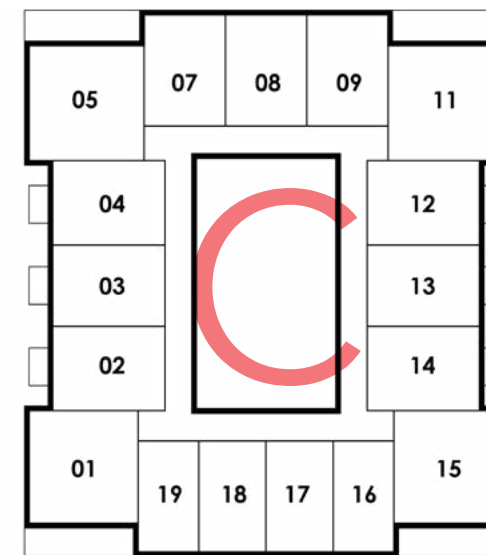
PRICE OPTIMIZATION
With algorithms designed to know when and where the best events in the world and in your city are happening you can count on pricing that reflects the supply and demand for your home - any day of the year.



MICRO*LUXE*
FLOOR PLANS

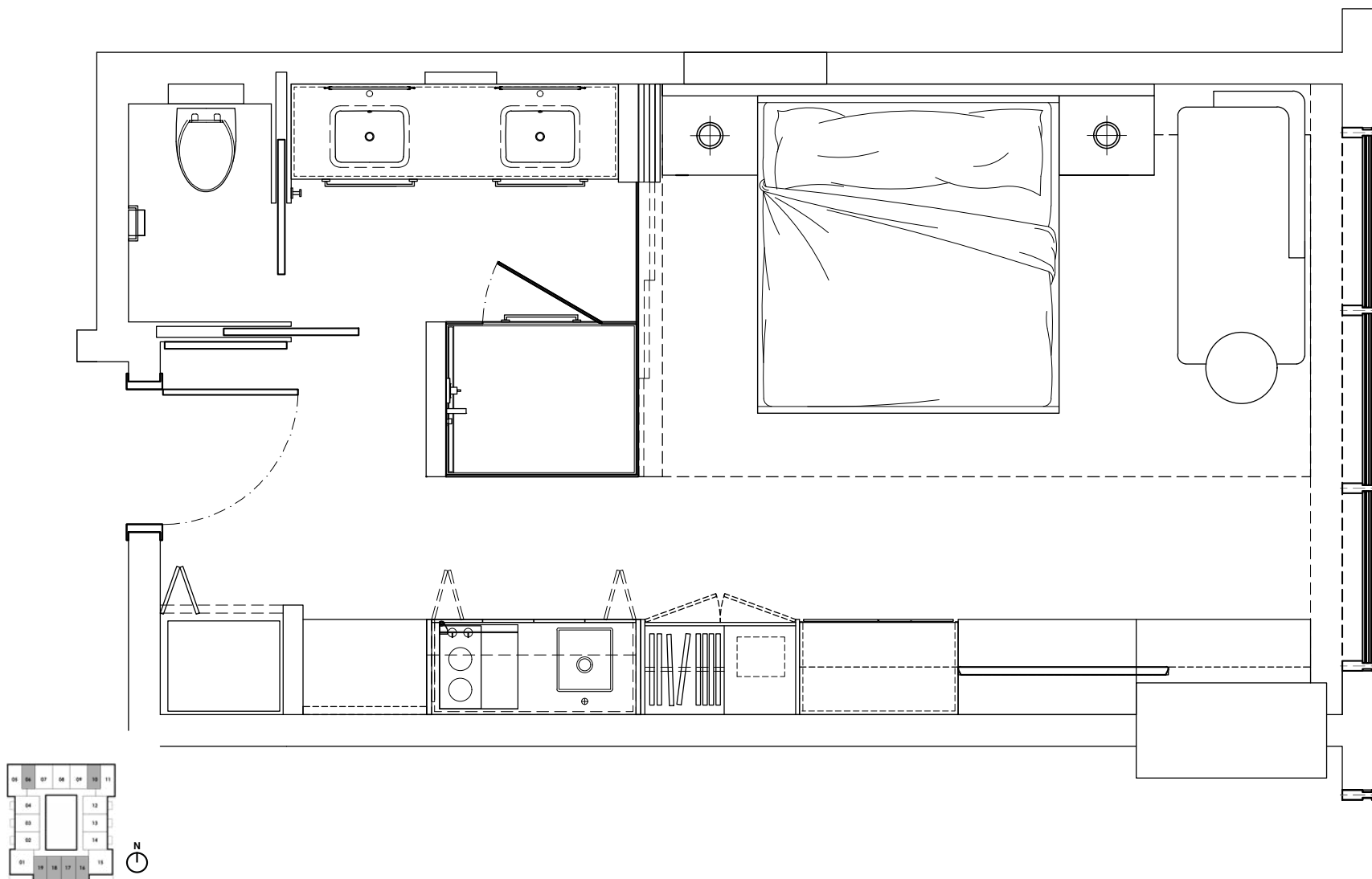


KEYPLATE A
LEVELS: 28-31, 34-37



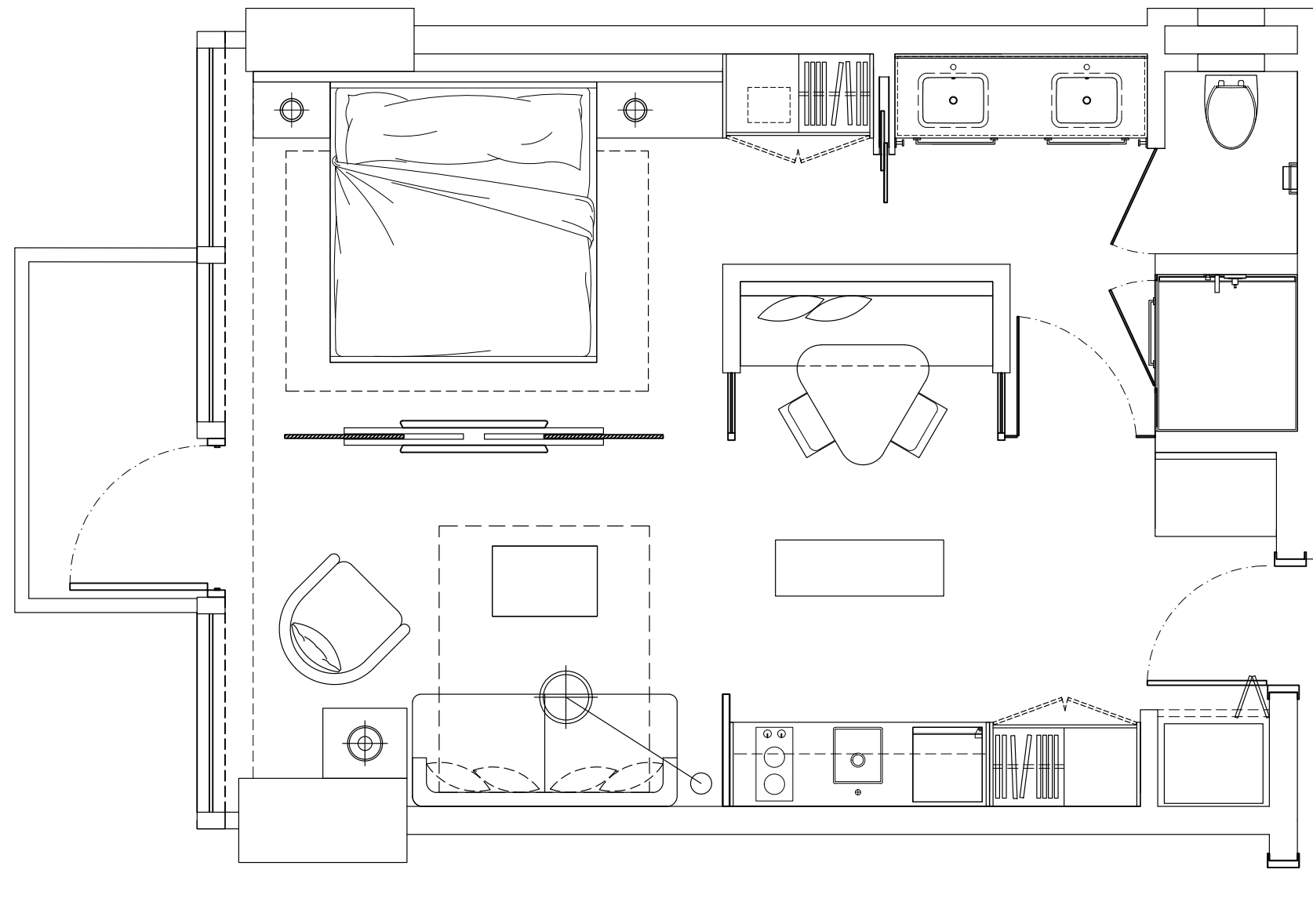
KEYPLATE C
LEVELS: 26, 27, 32, 33, 38, 39

A
362 SQ. FT. | 34 M²



THESE DRAWINGS ARE CONCEPTUAL ONLY AND ARE FOR THE CONVENIENCE OF REFERENCE. THEY SHOULD NOT BE RELIED UPON AS REPRESENTATIONS, EXPRESS OR IMPLIED, OF THE FINAL DETAIL OF THE RESIDENCES. UNITS SHOWN ARE EXAMPLES OF UNIT TYPES AND MAY NOT DEPICT ACTUAL UNITS. STATED SQUARE FOOTAGES ARE RANGES FOR A PARTICULAR UNIT TYPE AND ARE MEASURED TO THE EXTERIOR BOUNDARIES OF THE EXTERIOR WALLS AND THE CENTERLINE OF INTERIOR DEMISING WALLS AND IN FACT VARY FROM THE AREA THAT WOULD BE DETERMINED BY USING THE DESCRIPTION AND DEFINITION OF THE "UNIT" SET FORTH IN THE DECLARATION (WHICH GENERALLY ONLY INCLUDES THE INTERIOR AIRSPACE BETWEEN THE PERIMETER WALLS AND EXCLUDES INTERIOR STRUCTURAL COMPONENTS).

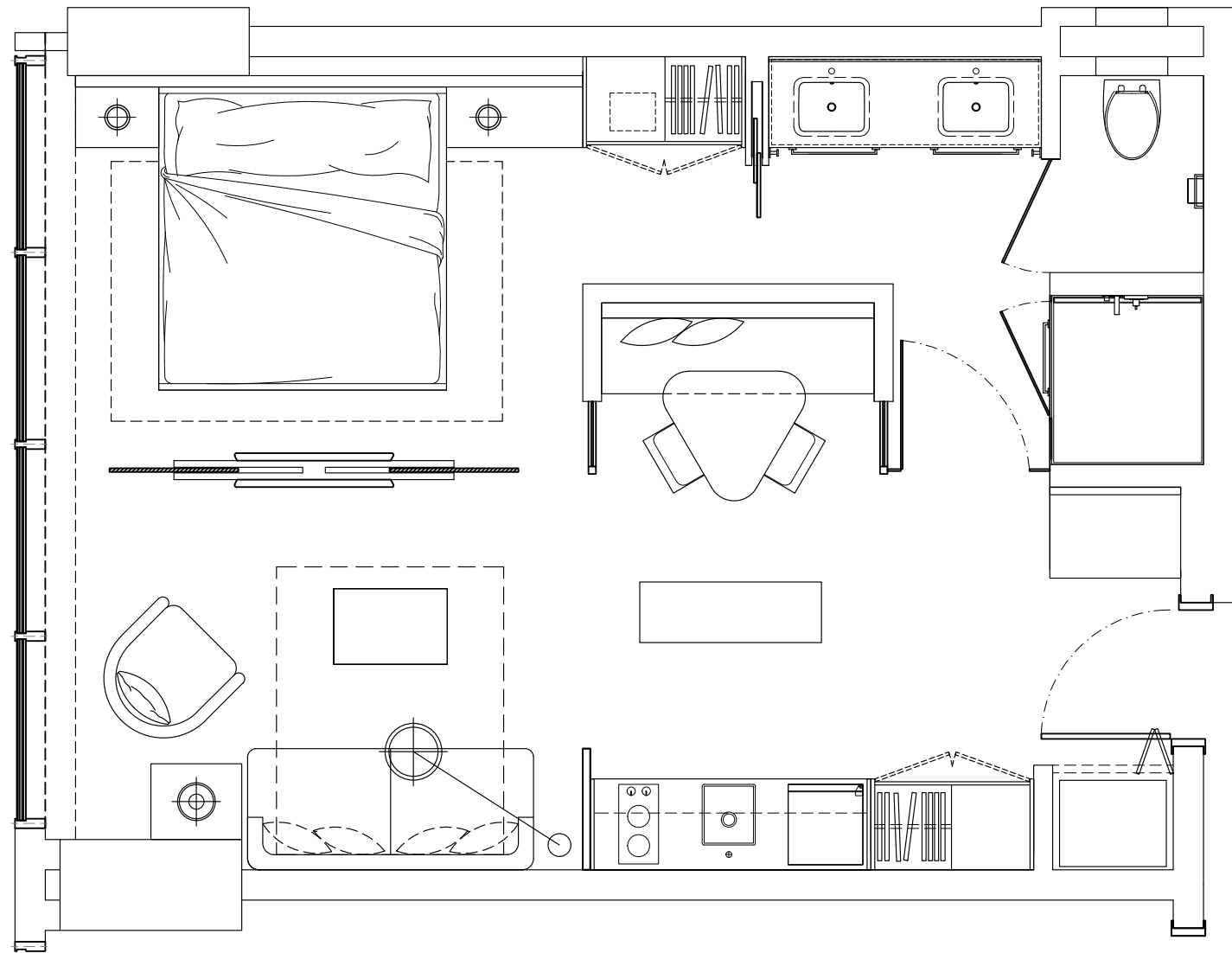
B1
487 SQ. FT. | 45 M²



THESE DRAWINGS ARE CONCEPTUAL ONLY AND ARE FOR THE CONVENIENCE OF REFERENCE. THEY SHOULD NOT BE RELIED UPON AS REPRESENTATIONS, EXPRESS OR IMPLIED, OF THE FINAL DETAIL OF THE RESIDENCES. UNITS SHOWN ARE EXAMPLES OF UNIT TYPES AND MAY NOT DEPICT ACTUAL UNITS. STATED SQUARE FOOTAGES ARE RANGES FOR A PARTICULAR UNIT TYPE AND ARE MEASURED TO THE EXTERIOR BOUNDARIES OF THE EXTERIOR WALLS AND THE CENTERLINE OF INTERIOR DEMISING WALLS AND IN FACT VARY FROM THE AREA THAT WOULD BE DETERMINED BY USING THE DESCRIPTION AND DEFINITION OF THE "UNIT" SET FORTH IN THE DECLARATION (WHICH GENERALLY ONLY INCLUDES THE INTERIOR AIRSPACE BETWEEN THE PERIMETER WALLS AND EXCLUDES INTERIOR STRUCTURAL COMPONENTS).

B2

486 SQ. FT. | 45 M²



THESE DRAWINGS ARE CONCEPTUAL ONLY AND ARE FOR THE CONVENIENCE OF REFERENCE. THEY SHOULD NOT BE RELIED UPON AS REPRESENTATIONS, EXPRESS OR IMPLIED, OF THE FINAL DETAIL OF THE RESIDENCES. UNITS SHOWN ARE EXAMPLES OF UNIT TYPES AND MAY NOT DEPICT ACTUAL UNITS. STATED SQUARE FOOTAGES ARE RANGES FOR A PARTICULAR UNIT TYPE AND ARE MEASURED TO THE EXTERIOR BOUNDARIES OF THE EXTERIOR WALLS AND THE CENTERLINE OF INTERIOR DEMISING WALLS AND IN FACT VARY FROM THE AREA THAT WOULD BE DETERMINED BY USING THE DESCRIPTION AND DEFINITION OF THE "UNIT" SET FORTH IN THE DECLARATION (WHICH GENERALLY ONLY INCLUDES THE INTERIOR AIRSPACE BETWEEN THE PERIMETER WALLS AND EXCLUDES INTERIOR STRUCTURAL COMPONENTS).

C

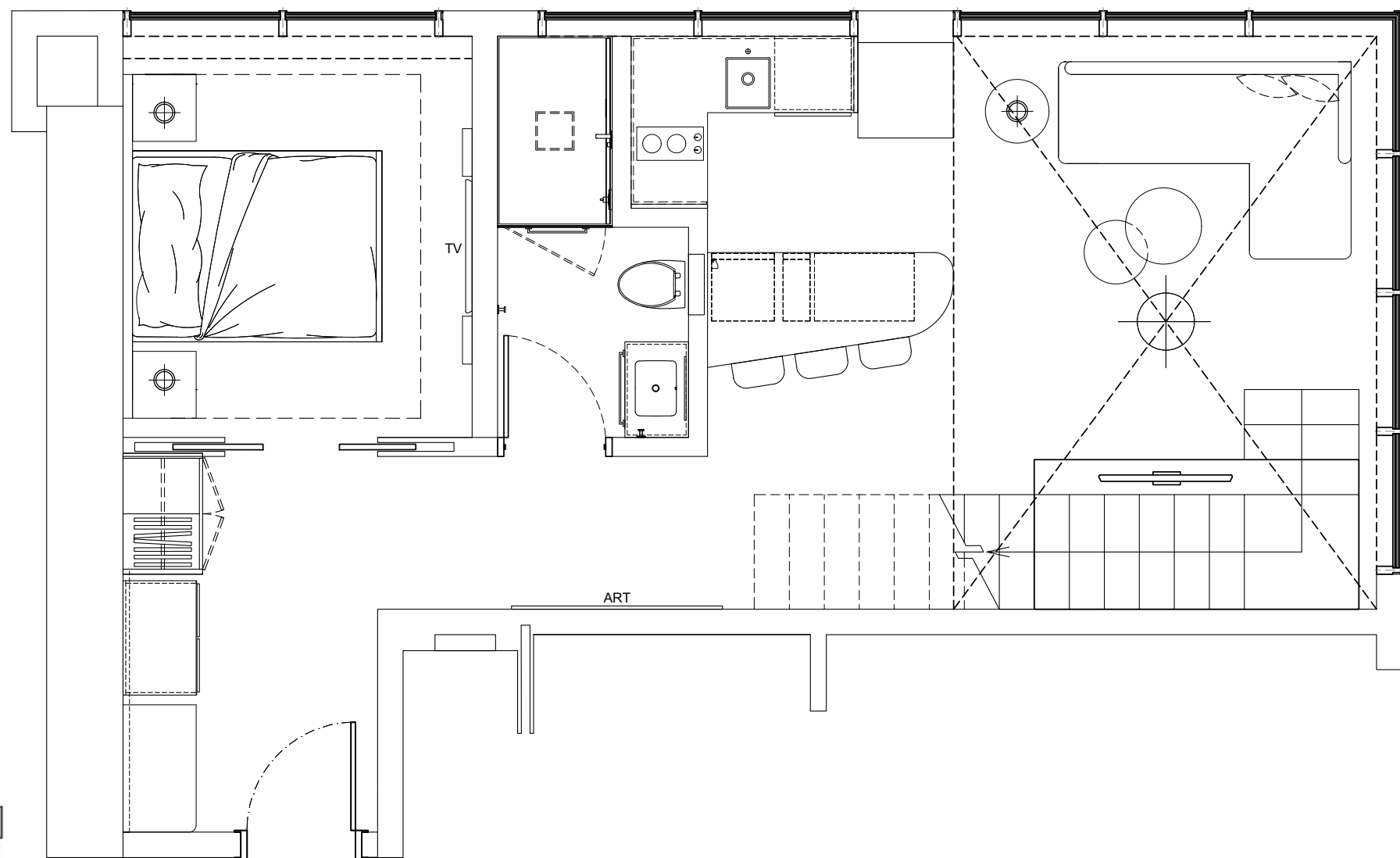
720 SQ. FT. | 66 M²



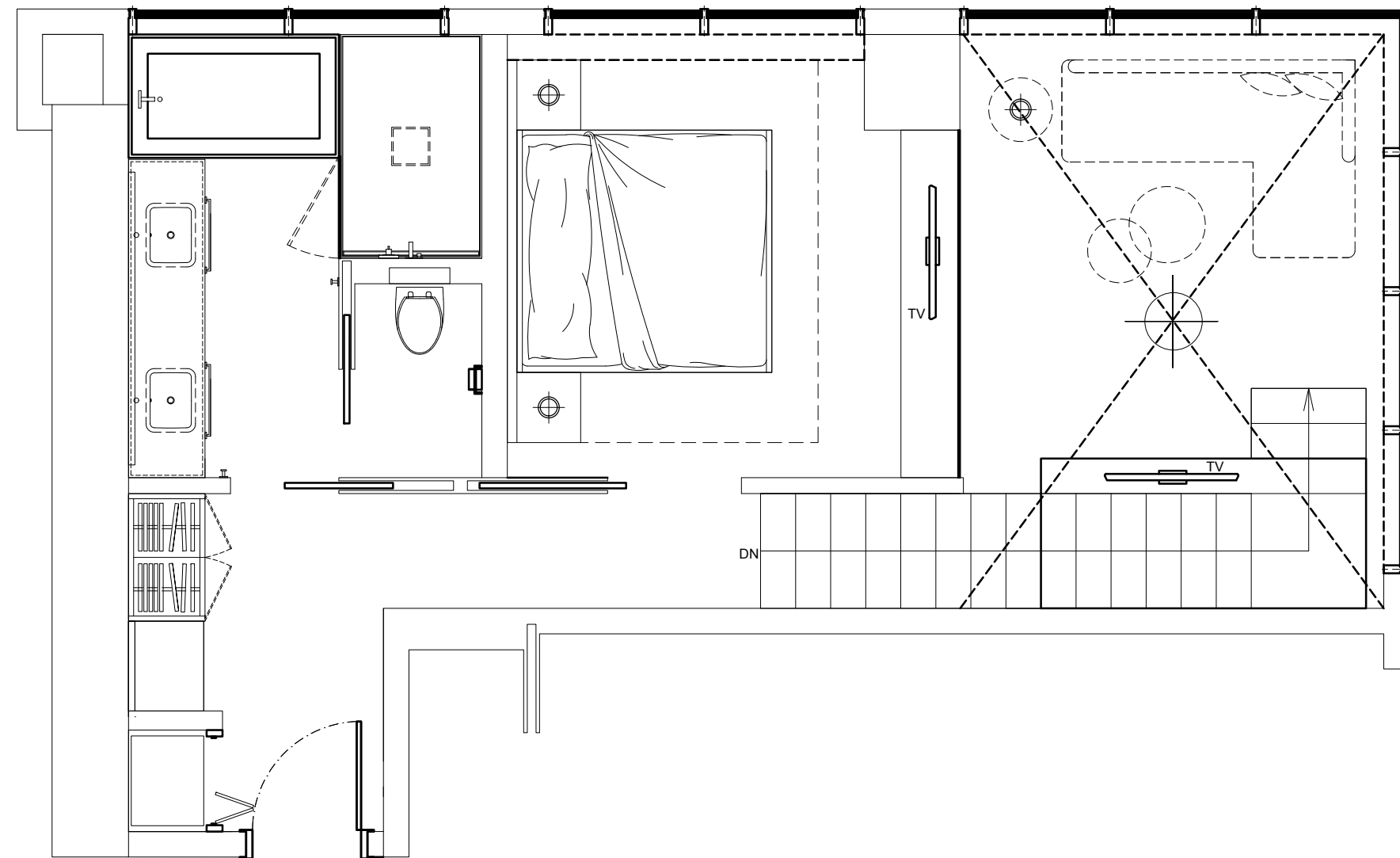
THESE DRAWINGS ARE CONCEPTUAL ONLY AND ARE FOR THE CONVENIENCE OF REFERENCE. THEY SHOULD NOT BE RELIED UPON AS REPRESENTATIONS, EXPRESS OR IMPLIED, OF THE FINAL DETAIL OF THE RESIDENCES. UNITS SHOWN ARE EXAMPLES OF UNIT TYPES AND MAY NOT DEPICT ACTUAL UNITS. STATED SQUARE FOOTAGES ARE RANGES FOR A PARTICULAR UNIT TYPE AND ARE MEASURED TO THE EXTERIOR BOUNDARIES OF THE EXTERIOR WALLS AND THE CENTERLINE OF INTERIOR DEMISING WALLS AND IN FACT VARY FROM THE AREA THAT WOULD BE DETERMINED BY USING THE DESCRIPTION AND DEFINITION OF THE "UNIT" SET FORTH IN THE DECLARATION (WHICH GENERALLY ONLY INCLUDES THE INTERIOR AIRSPACE BETWEEN THE PERIMETER WALLS AND EXCLUDES INTERIOR STRUCTURAL COMPONENTS).

D - LOWER

950 SQ. FT. | 88 M²



D - UPPER





OVER \$2.5B BUILT
IN A DIVERSIFIED PORTFOLIO



DEVELOPER

R | P | C
ROYAL PALM COMPANIES

Royal Palm Companies is an award-winning real estate developer and enjoys a 40-year reputation of creating exquisite large-scale, amenity-rich properties. Its profitable portfolio of completed projects include Mixed-Use, Condominium & Planned Residential Communities, Multi-Family Apartment Complexes, and Hospitality including Vacation Rentals, Second Homes, and Serviced Residences. Since the 1970s, Royal Palm Companies has completed more than 50 different developments, representing more than 6,000 income-producing units, and totaling more than \$2.5 billion in asset value.

The company has established itself as an industry leader because of its exceptional attention to detail and by creating high-added-value facilities that are strategically located and embody an unbeatable combination of focused design, aesthetic form, and purposeful functionality that together resonate an elegant sense of space and refined quality of life.

ARTIST CONCEPTUAL RENDERINGS. DEVELOPER MAY CHANGE WITHOUT NOTICE.

WHEN YOU DARE TO BE DIFFERENT
A PIONEER
A DISRUPTOR
IT'S BECAUSE YOU SEE THINGS
OTHERS DON'T
AND IMAGINING THEM IS NOT ENOUGH.
SO PENCIL TO PAPER YOU DRAW.
YOU MEASURE - OFTEN TWICE
AND THEN YOU CUT - DIG - CREATE.

Presented by Chris Lucco - TheMiamiProperties.com - Key International Sales LLC 786-232-3399



THESE DRAWINGS ARE CONCEPTUAL ONLY AND ARE FOR THE CONVENIENCE OF REFERENCE. THEY SHOULD NOT BE RELIED UPON AS REPRESENTATIONS, EXPRESS OR IMPLIED, OF THE FINAL DETAIL OF THE RESIDENCES. UNITS SHOWN ARE EXAMPLES OF UNIT TYPES AND MAY NOT DEPICT ACTUAL UNITS. STATED SQUARE FOOTAGES ARE RANGES FOR A PARTICULAR UNIT TYPE AND ARE MEASURED TO THE EXTERIOR BOUNDARIES OF THE EXTERIOR WALLS AND THE CENTERLINE OF INTERIOR DEMISING WALLS AND IN FACT VARY FROM THE AREA THAT WOULD BE DETERMINED BY USING THE DESCRIPTION AND DEFINITION OF THE "UNIT" SET FORTH IN THE DECLARATION (WHICH GENERALLY ONLY INCLUDES THE INTERIOR AIRSPACE BETWEEN THE PERIMETER WALLS AND EXCLUDES INTERIOR STRUCTURAL COMPONENTS).