

## UNIT A11

3 Bedroom / 3 Bath

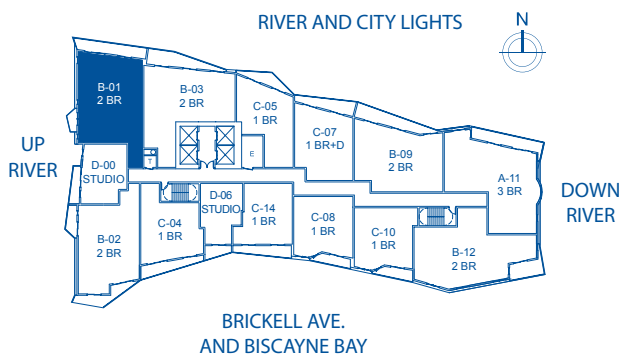
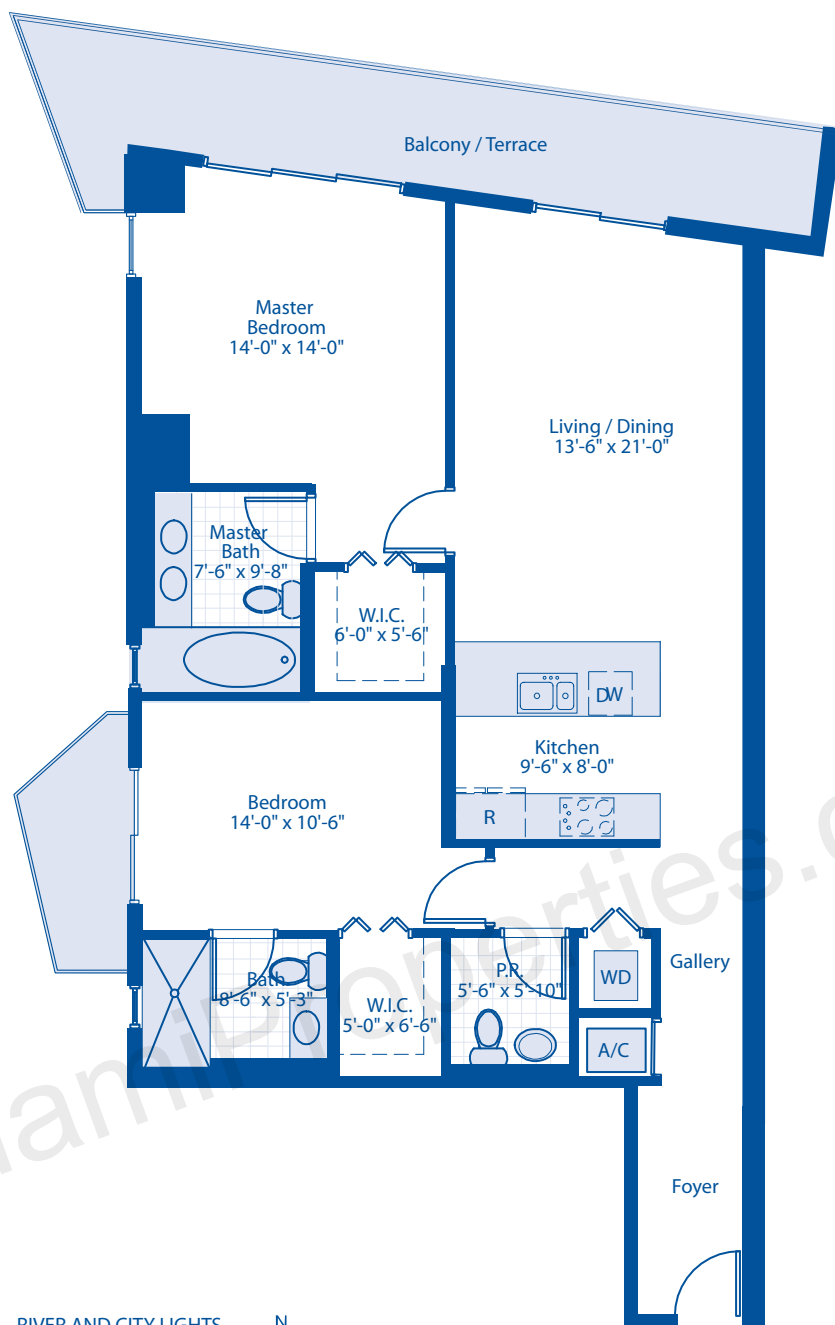
Area Under AC:	1,486 SF	138.0 M2
Balcony Area:	175 SF	16.3 M2
Total Area:	1,661 SF	154.3 M2

## 3 BEDROOM

ALL DIMENSIONS ARE APPROXIMATE AND SUBJECT TO CHANGE IN ACCORDANCE WITH THE AGREEMENT FOR SALE

**LATITUDE.**  
ON THE RIVER

The architectural plans are being provided for informational use only and without representation or warranty whatsoever. Without limiting the generality of the foregoing, any person using these plans, other than the developer and its contractor, and their respective subcontractors, shall be deemed to have acknowledged and agreed that: (a) these plans were designed solely for use by the Developer and its contractors for building construction purposes and may not be suitable for other purposes; (b) the actual improvements may differ substantially from those reflected in the plans due to "field conditions" and other factors, and independent field verification of all measurement, and the location of all mechanical, electrical, plumbing and other systems, will be necessary; (c) any measurements reflected in these plans are based on the "Architectural Method" of which in general measures the Unit to the outside finished surface of exterior walls, and the centerline of the interior demising walls, and includes portions of the adjacent Common Elements of the Condominium; (d) the exhibits to the Declaration of Condominium reflect measurements based upon the legal boundaries of the "Unit", as defined therein, which will be less than the measurements derived using the "Architectural Method" of measurement; (e) these plans shall not be deemed to constitute advertising or promotional materials; (f) the developer and the architect shall not be responsible for, and are released from, any claims arising out of the use of these plans and (g) alterations and improvements must be approved in accordance with the governing documents of the Condominium.



## UNIT B01

2 Bedroom / 2.5 Bath

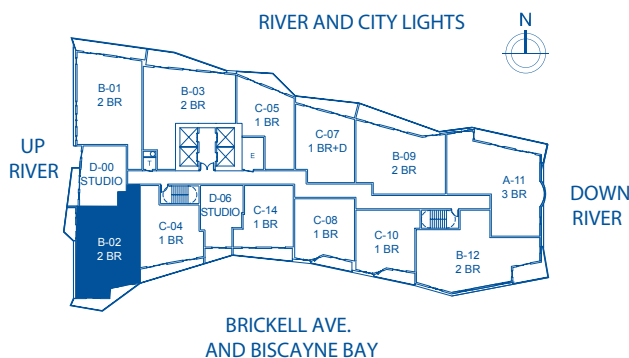
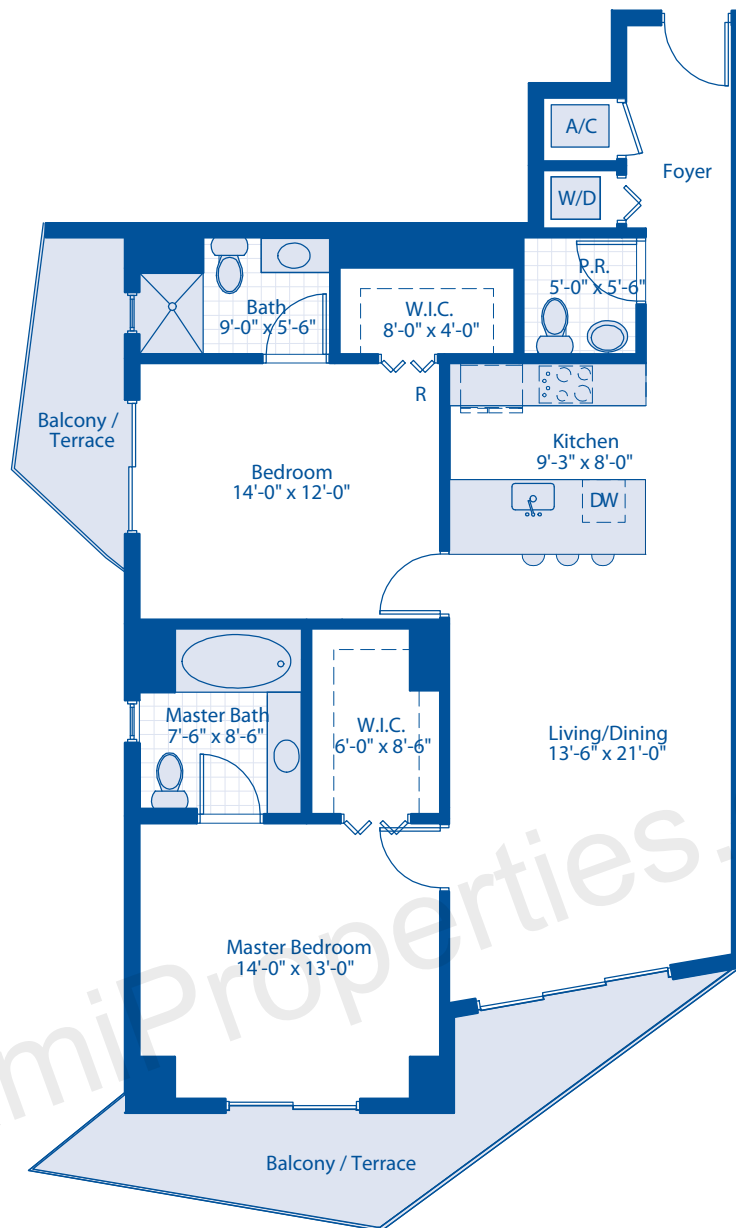
Area Under AC: 1,310 SF 121.7 M2  
Balcony Area: 234 SF 16.4 M2  
Total Area: 1,544 SF 138.1 M2

## 2 BEDROOM

ALL DIMENSIONS ARE APPROXIMATE AND SUBJECT TO  
CHANGE IN ACCORDANCE WITH THE AGREEMENT FOR SALE

**LATITUDE.**  
ON THE RIVER

The architectural plans are being provided for informational use only and without representation or warranty whatsoever. Without limiting the generality of the foregoing, any person using these plans, other than the developer and its contractor, and their respective subcontractors, shall be deemed to have acknowledged and agreed that; (a) these plans were designed solely for use by the Developer and its contractors for building construction purposes and may not be suitable for other purposes; (b) the actual improvements may differ substantially from those reflected in the plans due to "field conditions" and other factors, and independent field verification of all measurement, and the location of all mechanical, electrical, plumbing and other systems, will be necessary; (c) any measurements reflected in these plans are based on the "Architectural Method" of which in general measures the Unit to the outside finished surface of exterior walls, and the centerline of the interior demising walls, and includes portions of the adjacent Common Elements of the Condominium; (d) the exhibits to the Declaration of Condominium reflect measurements based upon the legal boundaries of the "Unit", as defined therein, which will be less than the measurements derived using the "Architectural Method" of measurement; (e) these plans shall not be deemed to constitute advertising or promotional materials; (f) the developer and the architect shall not be responsible for, and are released from, any claims arising out of the use of these plans and (g) alterations and improvements must be approved in accordance with the governing documents of the Condominium.



## UNIT B02

2 Bedroom / 2.5 Bath

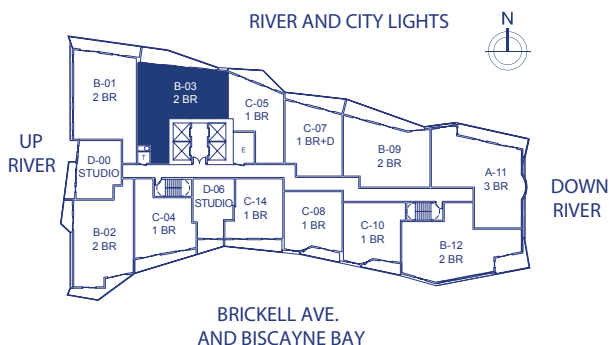
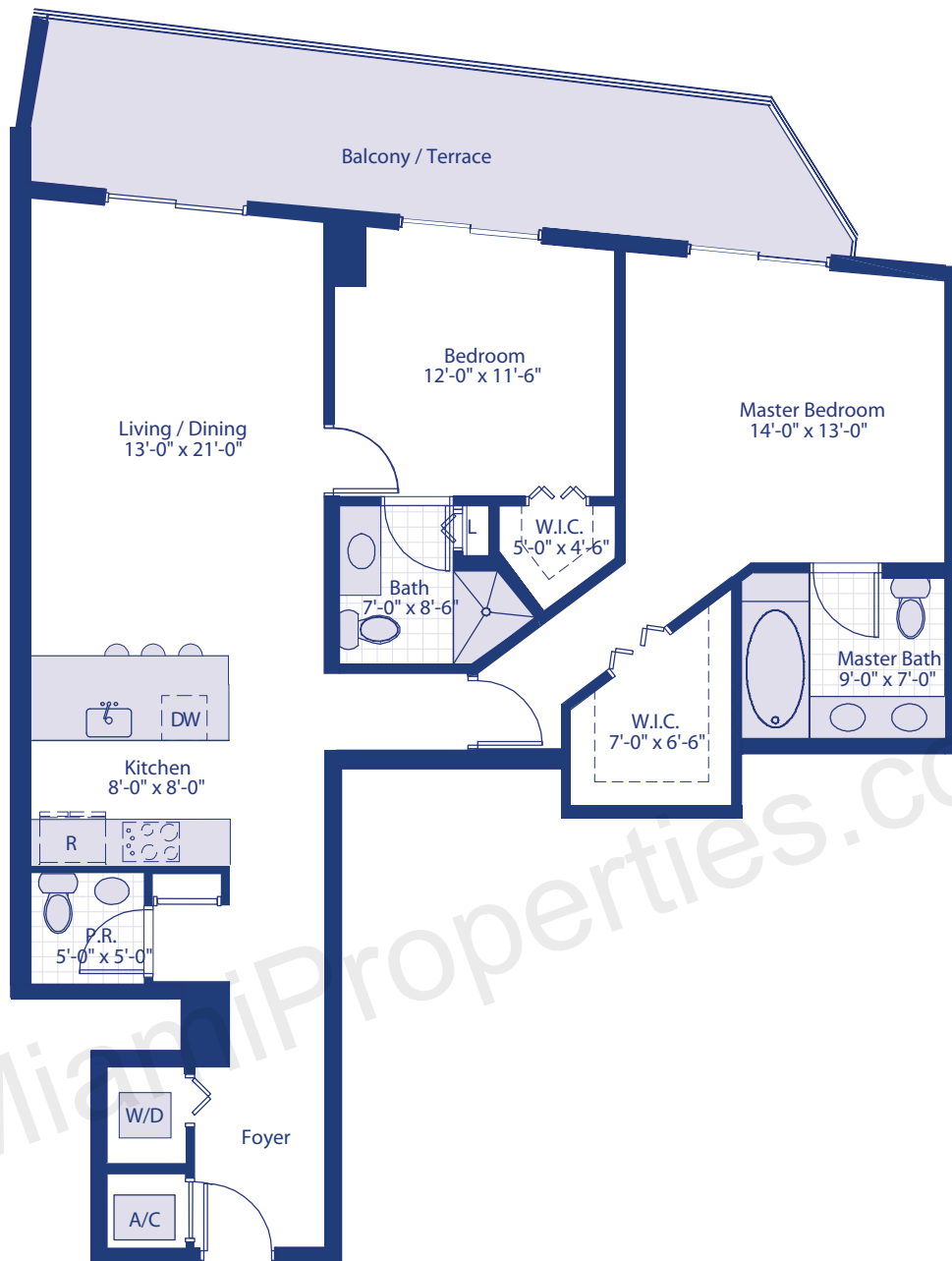
Area Under AC:	1,212 SF	112.6 M2
Balcony Area:	196 SF	18.2 M2
Total Area:	1,408 SF	130.8 M2

## 2 BEDROOM

ALL DIMENSIONS ARE APPROXIMATE AND SUBJECT TO CHANGE IN ACCORDANCE WITH THE AGREEMENT FOR SALE

**LATITUDE.**  
ON THE RIVER

The architectural plans are being provided for informational use only and without representation or warranty whatsoever. Without limiting the generality of the foregoing, any person using these plans, other than the developer and its contractor, and their respective subcontractors, shall be deemed to have acknowledged and agreed that: (a) these plans were designed solely for use by the Developer and its contractors for building construction purposes and may not be suitable for other purposes; (b) the actual improvements may differ substantially from those reflected in the plans due to "field conditions" and other factors, and independent field verification of all measurement, and the location of all mechanical, electrical, plumbing and other systems, will be necessary; (c) any measurements reflected in these plans are based on the "Architectural Method" of which in general measures the Unit to the outside finished surface of exterior walls, and the centerline of the interior demising walls, and includes portions of the adjacent Common Elements of the Condominium; (d) the exhibits to the Declaration of Condominium reflect measurements based upon the legal boundaries of the "Unit", as defined therein, which will be less than the measurements derived using the "Architectural Method" of measurement; (e) these plans shall not be deemed to constitute advertising or promotional materials; (f) the developer and the architect shall not be responsible for, and are released from, any claims arising out of the use of these plans and (g) alterations and improvements must be approved in accordance with the governing documents of the Condominium.



## UNIT B03

2 Bedroom / 2.5 Bath

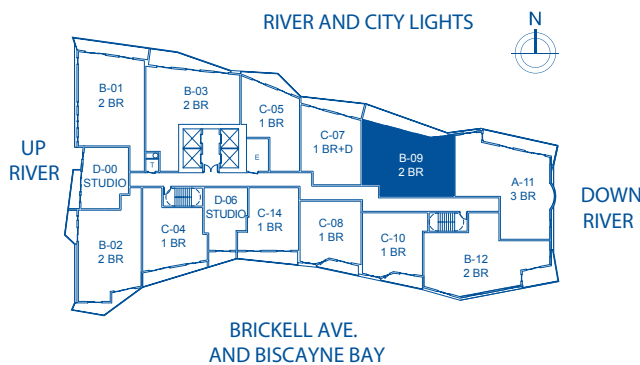
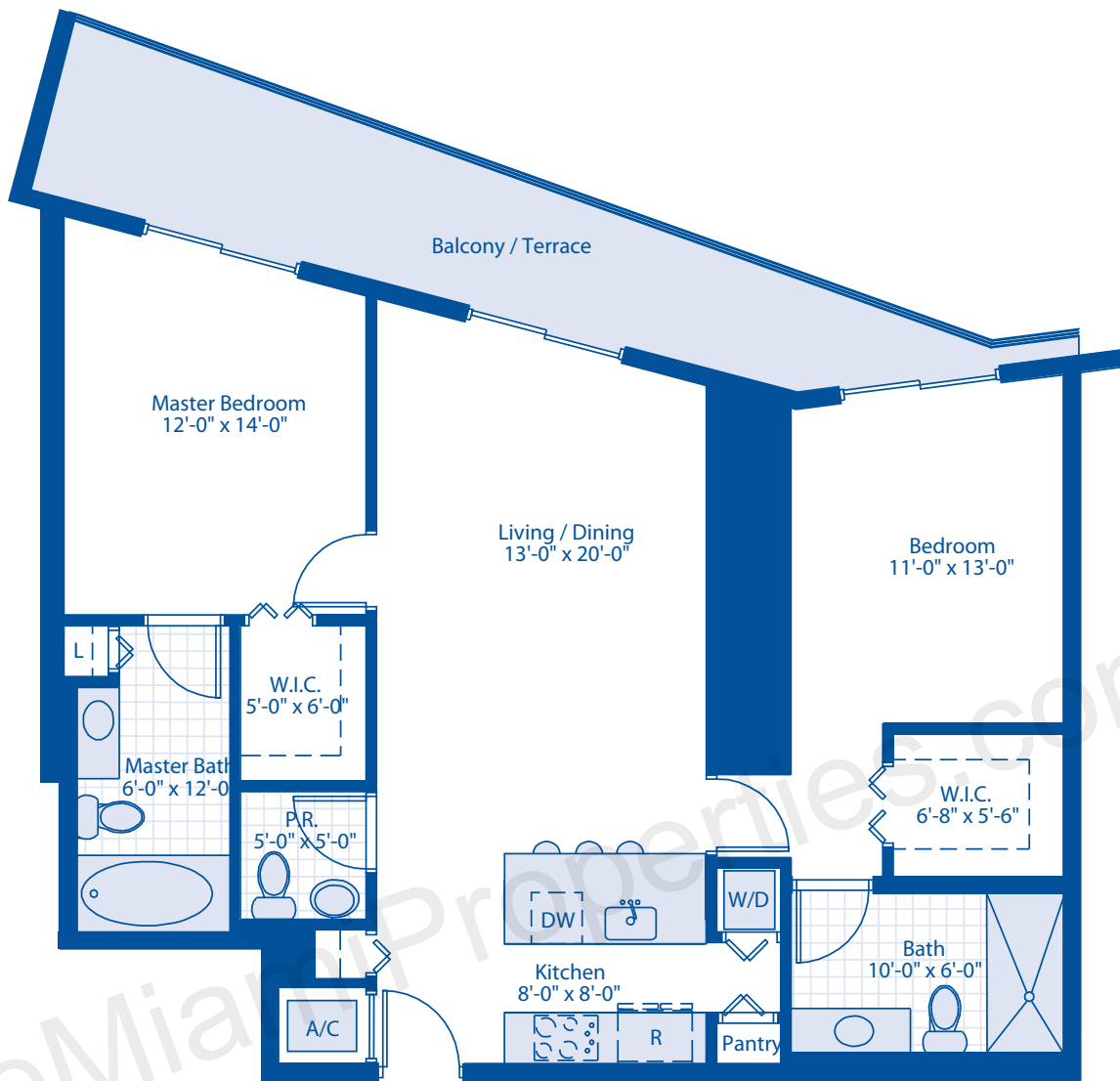
Area Under AC: 1,290 SF 119.9 M2  
Balcony Area: 242 SF 22.5 M2  
Total Area: 1,532 SF 142.2 M2

# 2 BEDROOM

ALL DIMENSIONS ARE APPROXIMATE AND SUBJECT TO CHANGE IN ACCORDANCE WITH THE AGREEMENT FOR SALE

**LATITUDE.**  
ON THE RIVER

The architectural plans are being provided for informational use only and without representation or warranty whatsoever. Without limiting the generality of the foregoing, any person using these plans, other than the developer and its contractor, and their respective subcontractors, shall be deemed to have acknowledged and agreed that: (a) these plans were designed solely for use by the Developer and its contractors for building construction purposes and may not be suitable for other purposes; (b) the actual improvements may differ substantially from those reflected in the plans due to "field conditions" and other factors, and independent field verification of all measurement, and the location of all mechanical, electrical, plumbing and other systems, will be necessary; (c) any measurements reflected in these plans are based on the "Architectural Method" of which in general measures the Unit to the outside finished surface of exterior walls, and the centerline of the Interior demising calls, and includes portions of the adjacent Common Elements of the Condominium; (d) the exhibits to the Declaration of Condominium reflect measurements based upon the legal boundaries of the "Unit", as defined therein, which will be less than the measurements derived using the "Architectural Method" of measurement; (e) these plans shall not be deemed to constitute advertising or promotional materials; (f) the developer and the architect shall not be responsible for, and are released from, any claims arising out of the use of these plans and (g) alterations and improvements must be approved in accordance with the governing documents of the Condominium.



## UNIT B09

2 Bedroom / 2.5 Bath

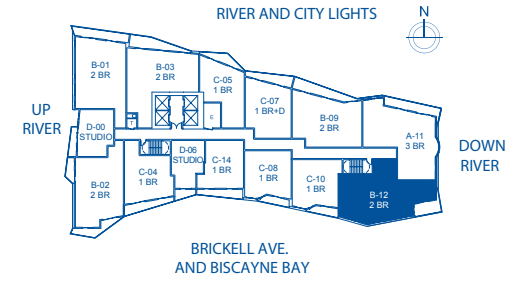
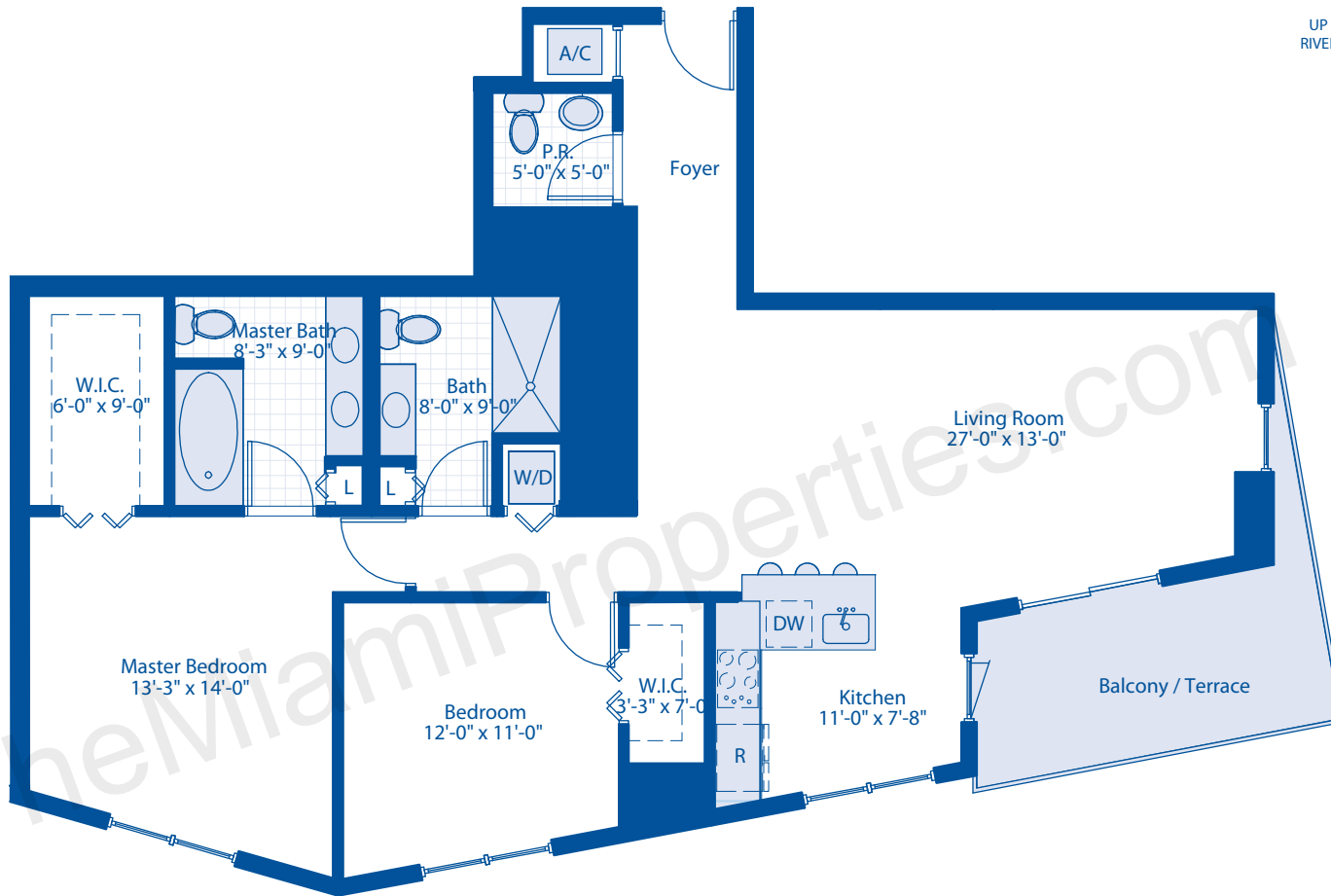
Area Under AC:	1,179 SF	109.5 M2
Balcony Area:	199 SF	18.5 M2
Total Area:	1,378 SF	128.0 M2

## 2 BEDROOM

ALL DIMENSIONS ARE APPROXIMATE AND SUBJECT TO CHANGE IN ACCORDANCE WITH THE AGREEMENT FOR SALE

**LATITUDE**  
ON THE RIVER

The architectural plans are being provided for informational use only and without representation or warranty whatsoever. Without limiting the generality of the foregoing, any person using these plans, other than the developer and its contractor, and their respective subcontractors, shall be deemed to have acknowledged and agreed that: (a) these plans were designed solely for use by the Developer and its contractors for building construction purposes and may not be suitable for other purposes; (b) the actual improvements may differ substantially from those reflected in the plans due to "field conditions" and other factors, and independent field verification of all measurement, and the location of all mechanical, electrical, plumbing and other systems, will be necessary; (c) any measurements reflected in these plans are based on the "Architectural Method" of which in general measures the Unit to the outside finished surface of exterior walls, and the centerline of the interior demising walls, and includes portions of the adjacent Common Elements of the Condominium; (d) the exhibits to the Declaration of Condominium reflect measurements based upon the legal boundaries of the "Unit", as defined therein, which will be less than the measurements derived using the "Architectural Method" of measurement; (e) these plans shall not be deemed to constitute advertising or promotional materials; (f) the developer and the architect shall not be responsible for, and are released from, any claims arising out of the use of these plans and (g) alterations and improvements must be approved in accordance with the governing documents of the Condominium.



## UNIT B12

2 Bedroom / 2.5 Bath

Area Under AC: 1,300 SF 120.8 M<sup>2</sup>

Balcony Area: 128 SF 11.9 M<sup>2</sup>

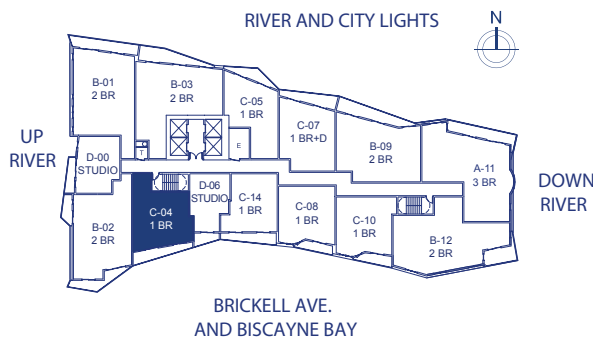
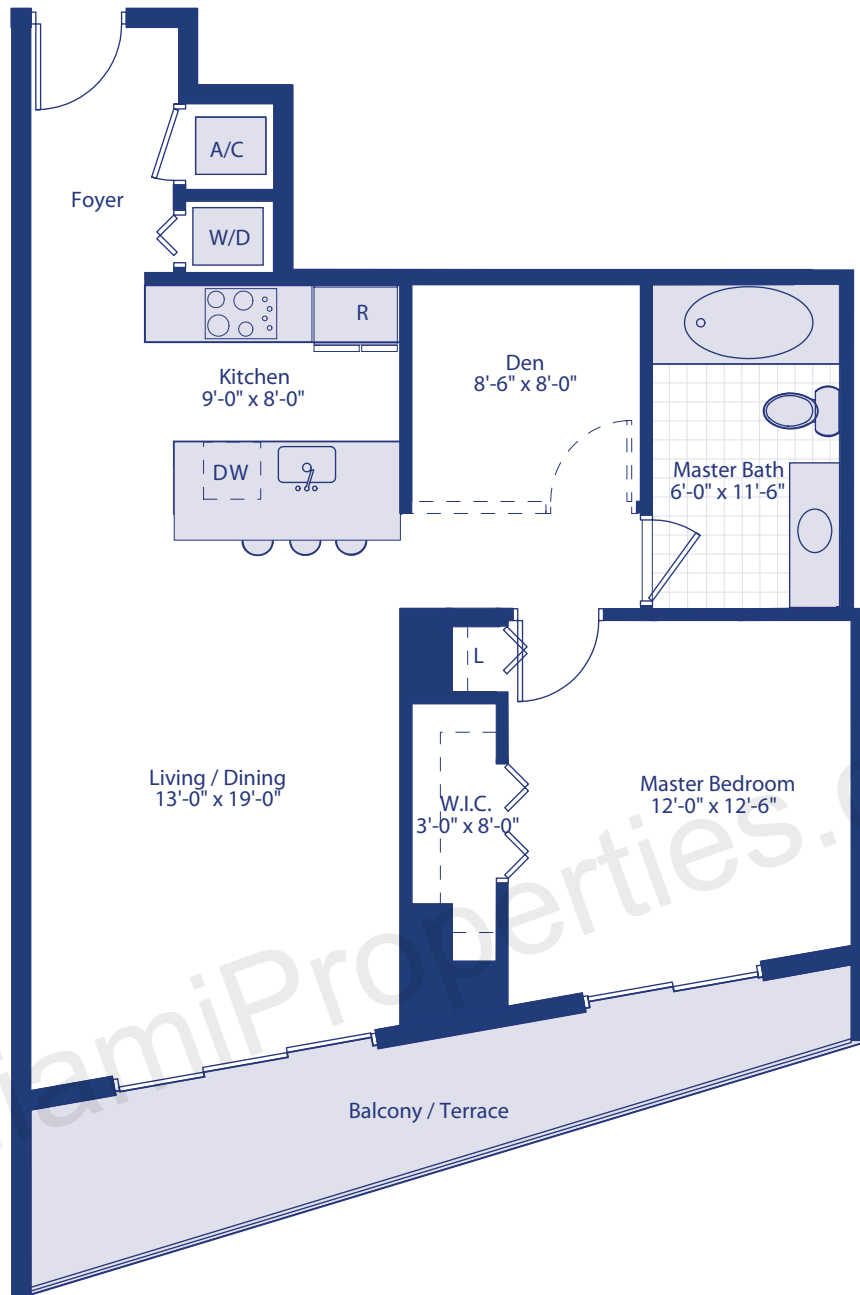
Total Area: 1,428 SF 132.7 M<sup>2</sup>

## 2 BEDROOM

ALL DIMENSIONS ARE APPROXIMATE AND SUBJECT TO  
CHANGE IN ACCORDANCE WITH THE AGREEMENT FOR SALE

**LATITUDE**  
ON THE RIVER

The architectural plans are being provided for informational use only and without representation or warranty whatsoever. Without limiting the generality of the foregoing, any person using these plans, other than the developer and its contractor, and their respective subcontractors, shall be deemed to have acknowledged and agreed that: (a) these plans were designed solely for use by the Developer and its contractors for building construction purposes and may not be suitable for other purposes; (b) the actual improvements may differ substantially from those reflected in the plans due to "field conditions" and other factors, and independent field verification of all measurement, and the location of all mechanical, electrical, plumbing and other systems, will be necessary; (c) any measurements reflected in these plans are based on the "Architectural Method" of which in general measures the Unit to the outside finished surface of exterior walls, and the centerline of the interior demising walls, and includes portions of the adjacent Common Elements of the Condominium; (d) the exhibits to the Declaration of Condominium reflect measurements based upon the legal boundaries of the "Unit", as defined therein, which will be less than the measurements derived using the "Architectural Method" of measurement; (e) these plans shall not be deemed to constitute advertising or promotional materials; (f) the developer and the architect shall not be responsible for, and are released from, any claims arising out of the use of these plans and (g) alterations and improvements must be approved in accordance with the governing documents of the Condominium.



## UNIT C04

1 Bedroom + Den / 1 Bath

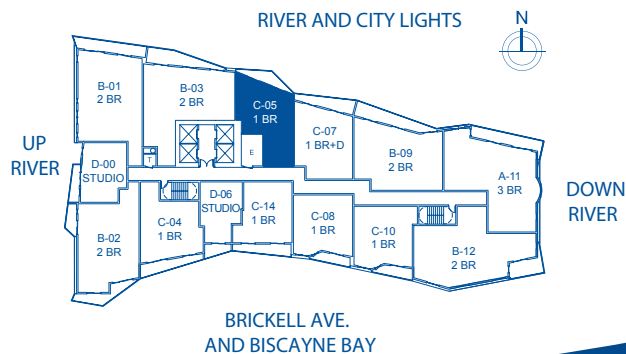
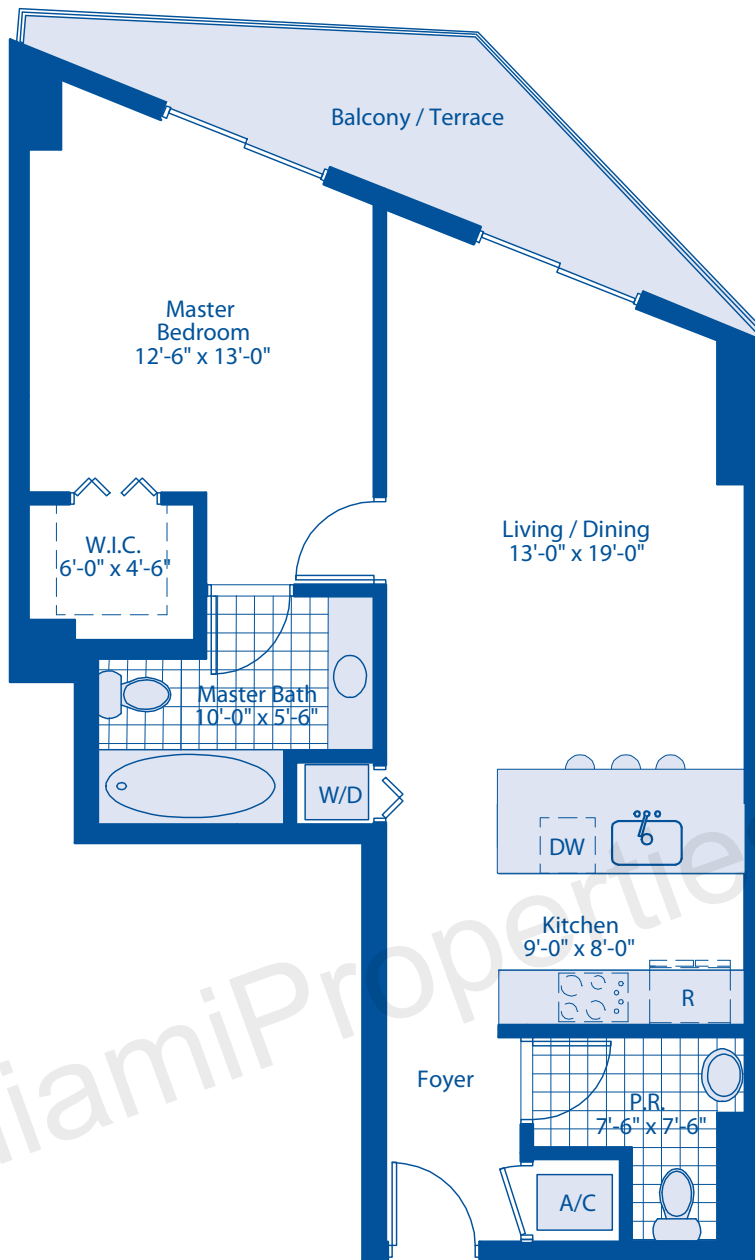
Area Under AC:	848 SF	78.9 M2
Balcony Area:	133 SF	12.4 M2
Total Area:	981 SF	91.3 M2

## 1 BEDROOM

ALL DIMENSIONS ARE APPROXIMATE AND SUBJECT TO CHANGE IN ACCORDANCE WITH THE AGREEMENT FOR SALE

**LATITUDE.**  
ON THE RIVER

The architectural plans are being provided for informational use only and without representation or warranty whatsoever. Without limiting the generality of the foregoing, any person using these plans, other than the developer and its contractor, and their respective subcontractors, shall be deemed to have acknowledged and agreed that: (a) these plans were designed solely for use by the Developer and its contractors for building construction purposes and may not be suitable for other purposes; (b) the actual improvements may differ substantially from those reflected in the plans due to "field conditions" and other factors, and independent field verification of all measurement, and the location of all mechanical, electrical, plumbing and other systems, will be necessary; (c) any measurements reflected in these plans are based on the "Architectural Method" of which in general measures the Unit to the outside finished surface of exterior walls, and the centerline of the interior demising walls, and includes portions of the adjacent Common Elements of the Condominium; (d) the exhibits to the Declaration of Condominium reflect measurements based upon the legal boundaries of the "Unit", as defined therein, which will be less than the measurements derived using the "Architectural Method" of measurement; (e) these plans shall not be deemed to constitute advertising or promotional materials; (f) the developer and the architect shall not be responsible for, and are released from, any claims arising out of the use of these plans and (g) alterations and improvements must be approved in accordance with the governing documents of the Condominium.



## UNIT C05

1 Bedroom / 1.5 Bath

Area Under AC:	825 SF	76.6 M2
Balcony Area:	104 SF	9.7 M2
Total Area:	929 SF	86.3 M2

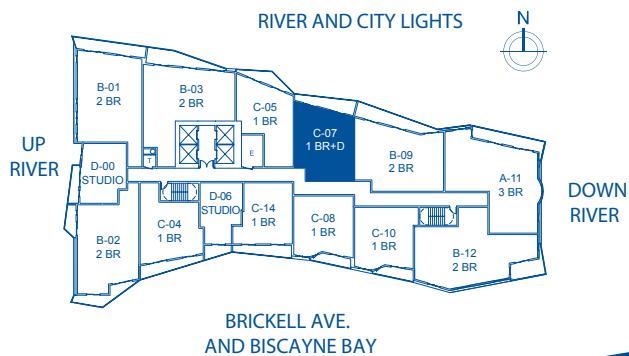
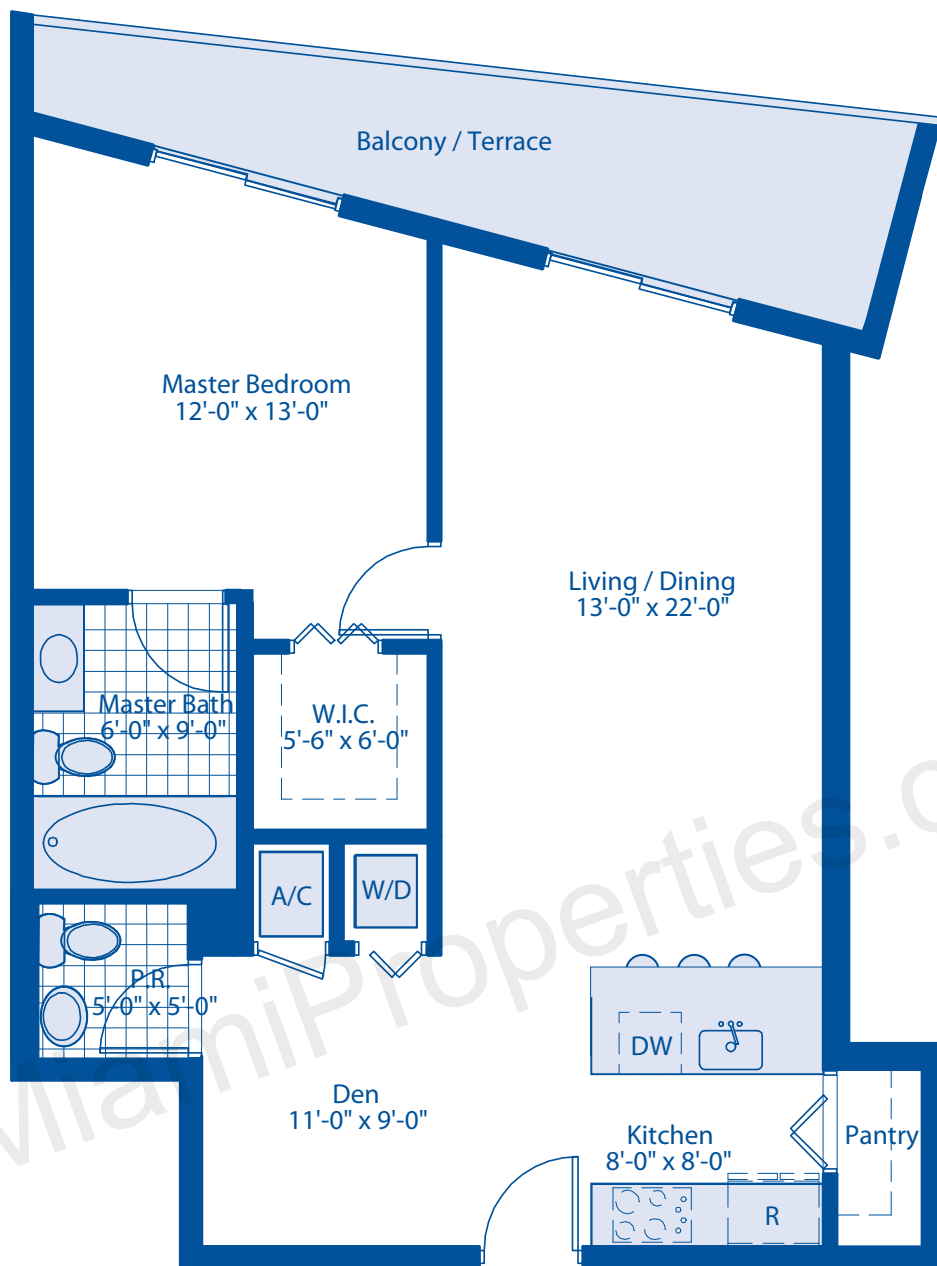
## 1 BEDROOM

ALL DIMENSIONS ARE APPROXIMATE AND SUBJECT TO CHANGE IN ACCORDANCE WITH THE AGREEMENT FOR SALE

**LATITUDE**  
ON THE RIVER

The architectural plans are being provided for informational use only and without representation or warranty whatsoever. Without limiting the generality of the foregoing, any person using these plans, other than the developer and its contractor, and their respective subcontractors, shall be deemed to have acknowledged and agreed that: (a) these plans were designed solely for use by the Developer and its contractors for building construction purposes and may not be suitable for other purposes; (b) the actual improvements may differ substantially from those reflected in the plans due to "field conditions" and other factors; and independent field verification of all measurement, and the location of all mechanical, electrical, plumbing and other systems, will be necessary; (c) any measurements reflected in these plans are based on the "Architectural Method" of which in general measures the Unit to the outside finished surface of exterior walls, and the centerline of the interior demising walls, and includes portions of the adjacent Common Elements of the Condominium; (d) the exhibits to the Declaration of Condominium reflect measurements based upon the legal boundaries of the "Unit", as defined therein, which will be less than the measurements derived using the "Architectural Method" of measurement; (e) these plans shall not be deemed to constitute advertising or promotional materials; (f) the developer and the architect shall not be responsible for, and are released from, any claims arising out of the use of these plans and (g) alterations and improvements must be approved in accordance with the governing documents of the Condominium.





## UNIT C07

1 Bedroom + Den / 1.5 Bath

Area Under AC: 899 SF 83.5 M2

Balcony Area: 141 SF 13.0 M2

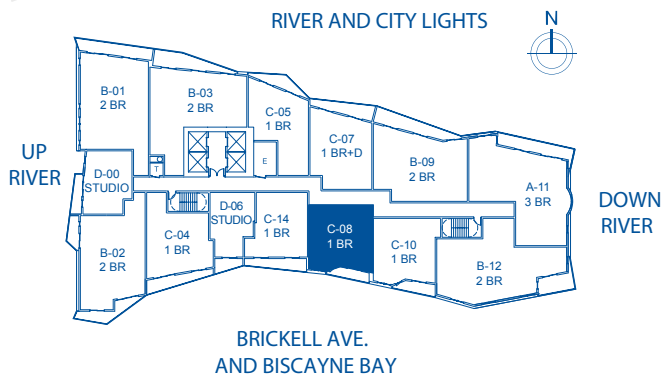
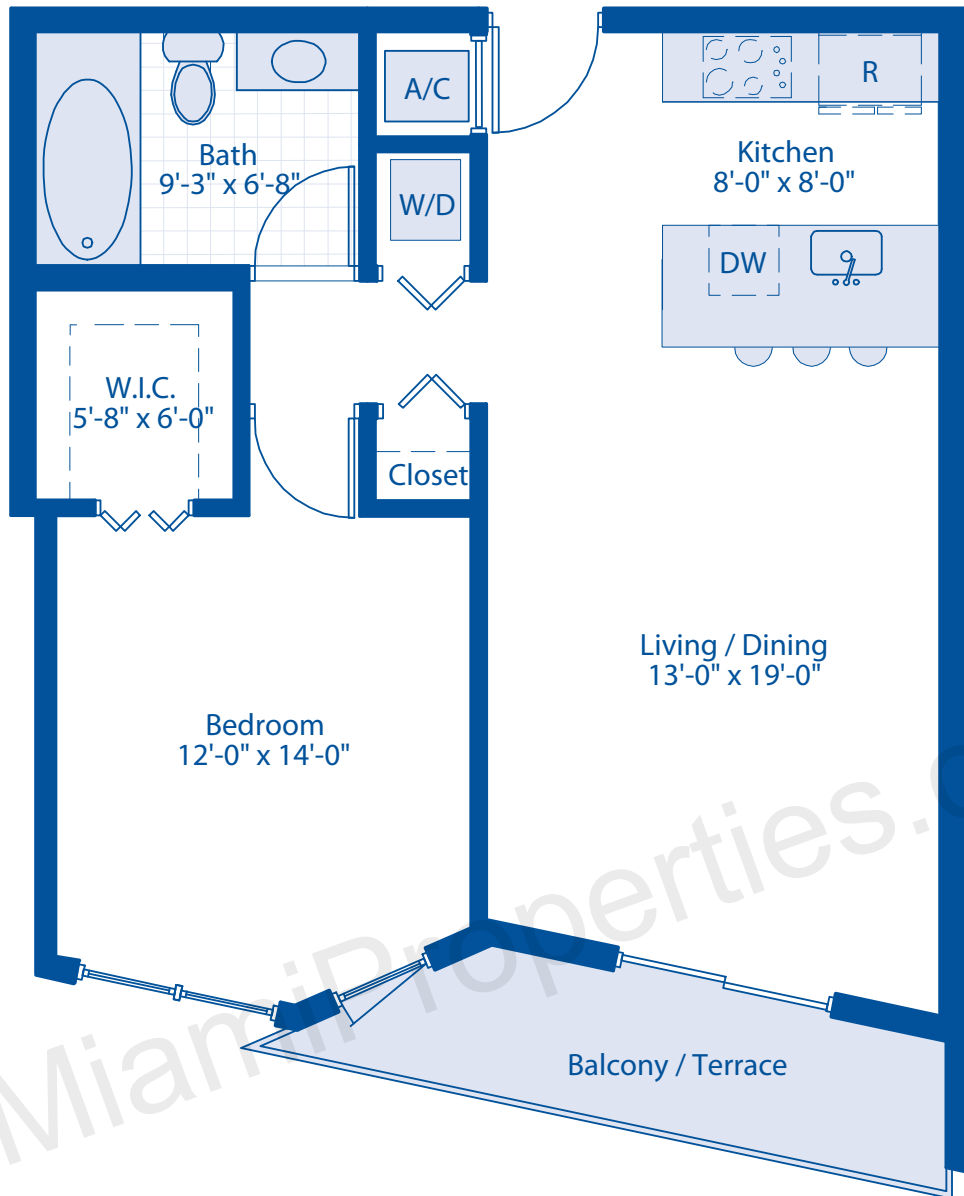
Total Area: 1,040 SF 96.5 M2

## 1 BEDROOM

ALL DIMENSIONS ARE APPROXIMATE AND SUBJECT TO CHANGE IN ACCORDANCE WITH THE AGREEMENT FOR SALE

**LATITUDE.**  
ON THE RIVER

The architectural plans are being provided for informational use only and without representation or warranty whatsoever. Without limiting the generality of the foregoing, any person using these plans, other than the developer and its contractor, and their respective subcontractors, shall be deemed to have acknowledged and agreed that: (a) these plans were designed solely for use by the Developer and its contractors for building construction purposes and may not be suitable for other purposes; (b) the actual improvements may differ substantially from those reflected in the plans due to "field conditions" and other factors, and independent field verification of all measurement, and the location of all mechanical, electrical, plumbing and other systems, will be necessary; (c) any measurements reflected in these plans are based on the "Architectural Method" of which in general measures the Unit to the outside finished surface of exterior walls, and the centerline of the Interior demising walls, and includes portions of the adjacent Common Elements of the Condominium; (d) the exhibits to the Declaration of Condominium reflect measurements based upon the legal boundaries of the "Unit", as defined therein, which will be less than the measurements derived using the "Architectural Method" of measurement; (e) these plans shall not be deemed to constitute advertising or promotional materials; (f) the developer and the architect shall not be responsible for, and are released from, any claims arising out of the use of these plans and (g) alterations and improvements must be approved in accordance with the governing documents of the Condominium.



## UNIT C08

1 Bedroom / 1 Bath

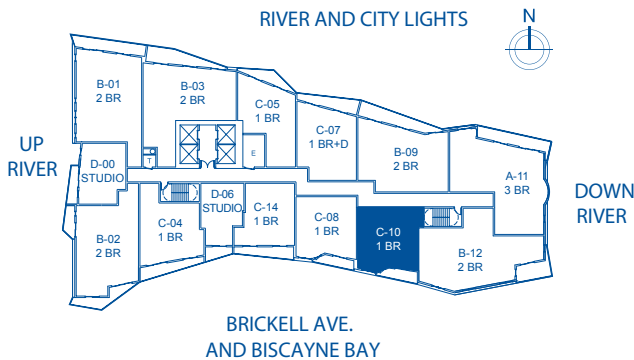
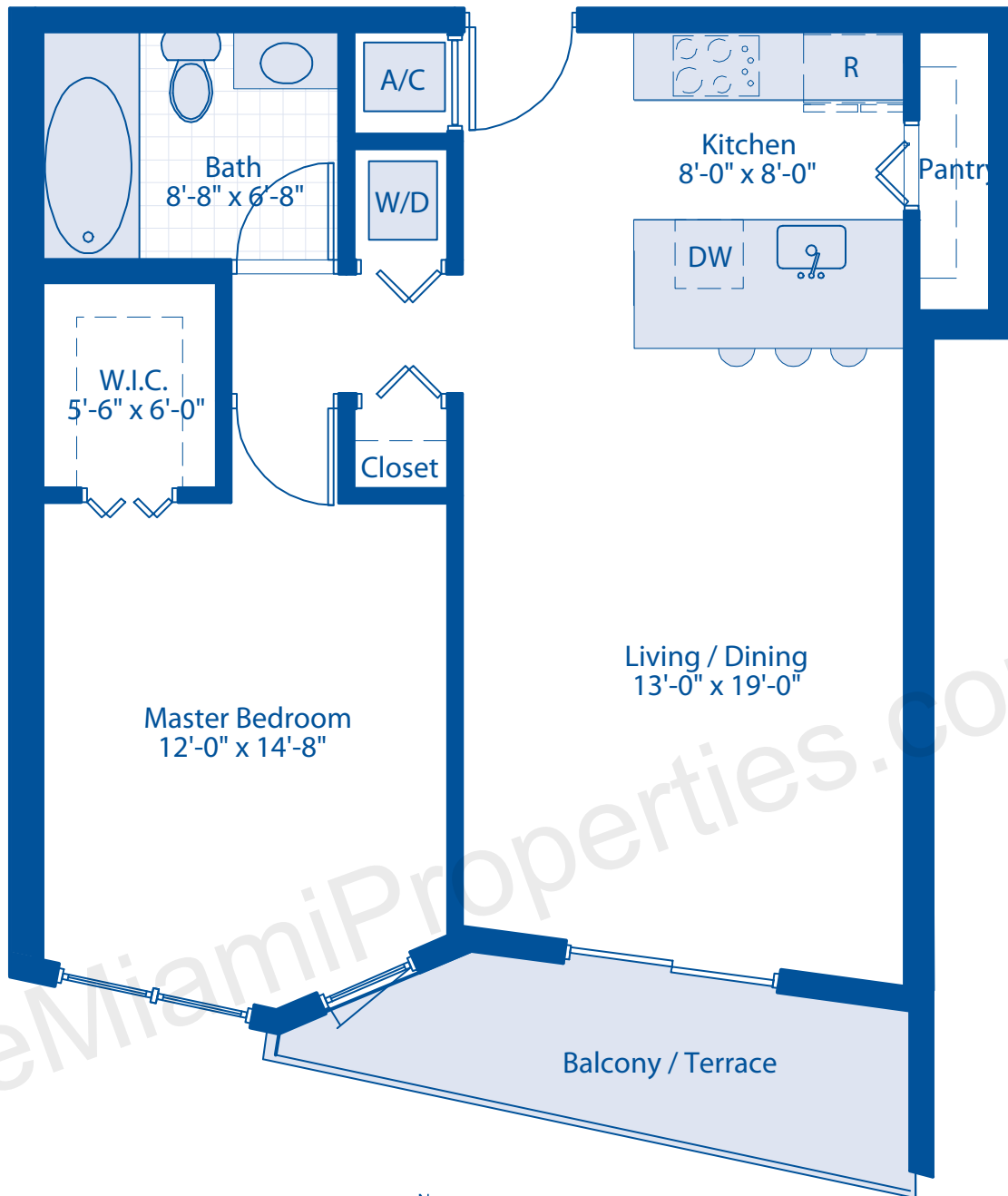
Area Under AC:	783 SF	72.8 M2
Balcony Area:	74 SF	6.9 M2
Total Area:	857 SF	79.7 M2

## 1 BEDROOM

ALL DIMENSIONS ARE APPROXIMATE AND SUBJECT TO CHANGE IN ACCORDANCE WITH THE AGREEMENT FOR SALE

**LATITUDE.**  
ON THE RIVER

The architectural plans are being provided for informational use only and without representation or warranty whatsoever. Without limiting the generality of the foregoing, any person using these plans, other than the developer and its contractor, and their respective subcontractors, shall be deemed to have acknowledged and agreed that: (a) these plans were designed solely for use by the Developer and its contractors for building construction purposes and may not be suitable for other purposes; (b) the actual improvements may differ substantially from those reflected in the plans due to "field conditions" and other factors, and independent field verification of all measurement, and the location of all mechanical, electrical, plumbing and other systems, will be necessary; (c) any measurements reflected in these plans are based on the "Architectural Method" of which in general measures the Unit to the outside finished surface of exterior walls, and the centerline of the interior demising walls, and includes portions of the adjacent Common Elements of the Condominium; (d) the exhibits to the Declaration of Condominium reflect measurements based upon the legal boundaries of the "Unit", as defined therein, which will be less than the measurements derived using the "Architectural Method" of measurement; (e) these plans shall not be deemed to constitute advertising or promotional materials; (f) the developer and the architect shall not be responsible for, and are released from, any claims arising out of the use of these plans and (g) alterations and improvements must be approved in accordance with the governing documents of the Condominium.



## UNIT C10

1 Bedroom / 1 Bath

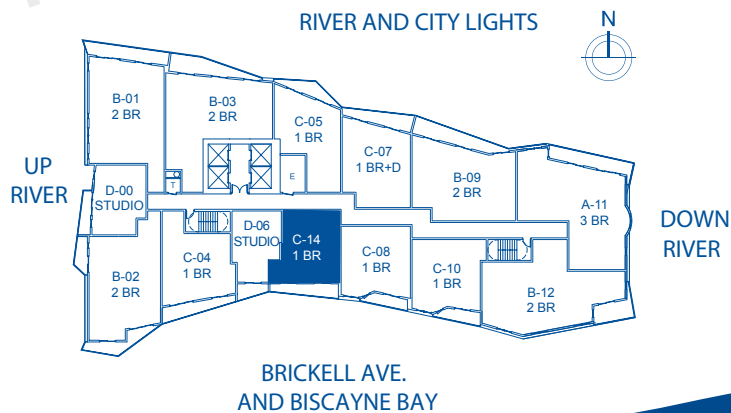
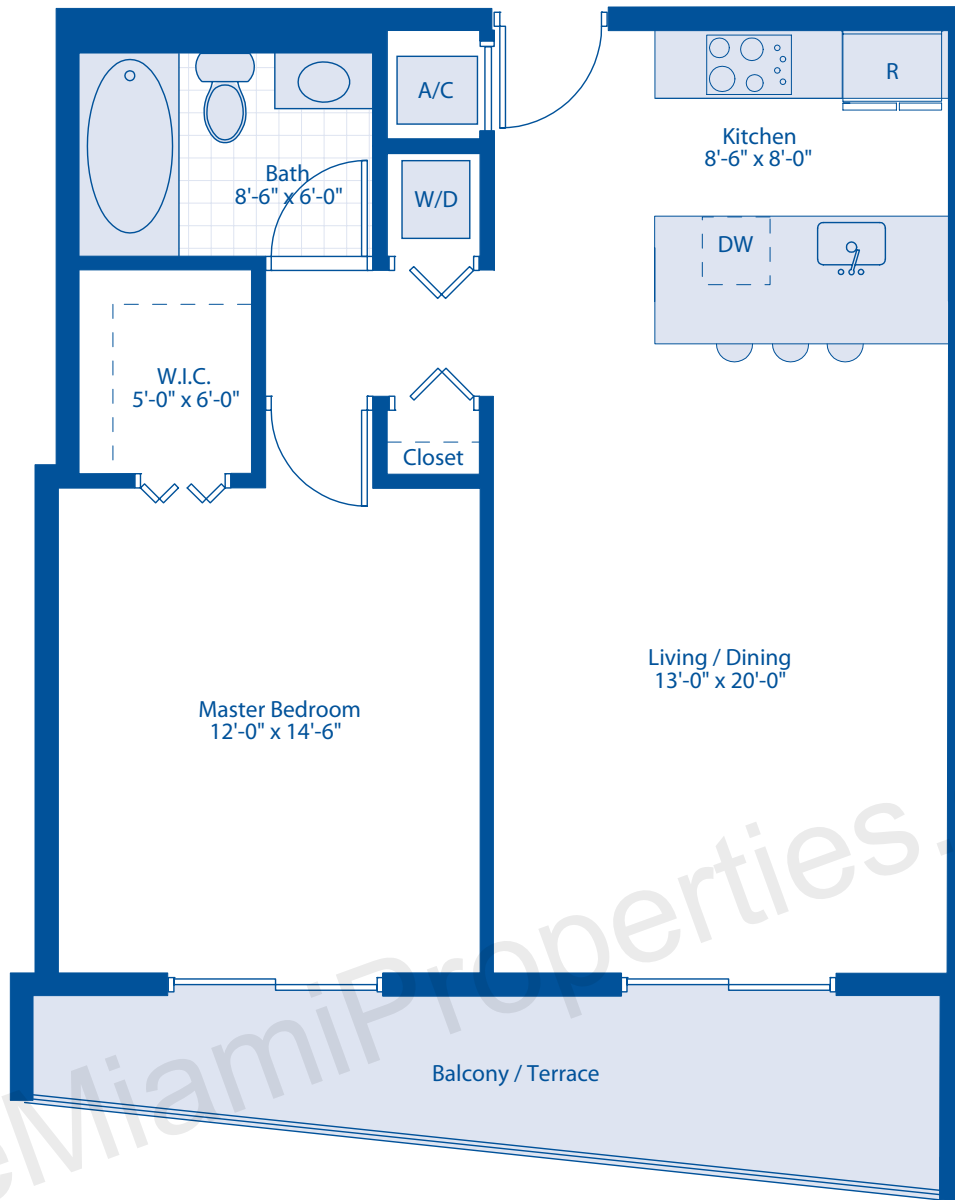
Area Under AC:	832 SF	77.3 M2
Balcony Area:	80 SF	7.4 M2
Total Area:	912 SF	84.7 M2

## 1 BEDROOM

ALL DIMENSIONS ARE APPROXIMATE AND SUBJECT TO CHANGE IN ACCORDANCE WITH THE AGREEMENT FOR SALE

**LATITUDE.**  
ON THE RIVER

The architectural plans are being provided for informational use only and without representation or warranty whatsoever. Without limiting the generality of the foregoing, any person using these plans, other than the developer and its contractor, and their respective subcontractors, shall be deemed to have acknowledged and agreed that: (a) these plans were designed solely for use by the Developer and its contractors for building construction purposes and may not be suitable for other purposes; (b) the actual improvements may differ substantially from those reflected in the plans due to "field conditions" and other factors, and independent field verification of all measurement, and the location of all mechanical, electrical, plumbing and other systems, will be necessary; (c) any measurements reflected in these plans are based on the "Architectural Method" of which in general measures the Unit to the outside finished surface of exterior walls, and the centerline of the interior demising walls, and includes portions of the adjacent Common Elements of the Condominium; (d) the exhibits to the Declaration of Condominium reflect measurements based upon the legal boundaries of the "Unit", as defined therein, which will be less than the measurements derived using the "Architectural Method" of measurement; (e) these plans shall not be deemed to constitute advertising or promotional materials; (f) the developer and the architect shall not be responsible for, and are released from, any claims arising out of the use of these plans and (g) alterations and improvements must be approved in accordance with the governing documents of the Condominium.



## UNIT C14

1 Bedroom / 1 Bath

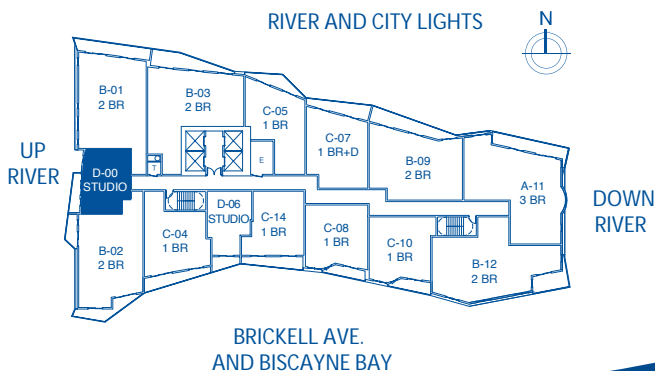
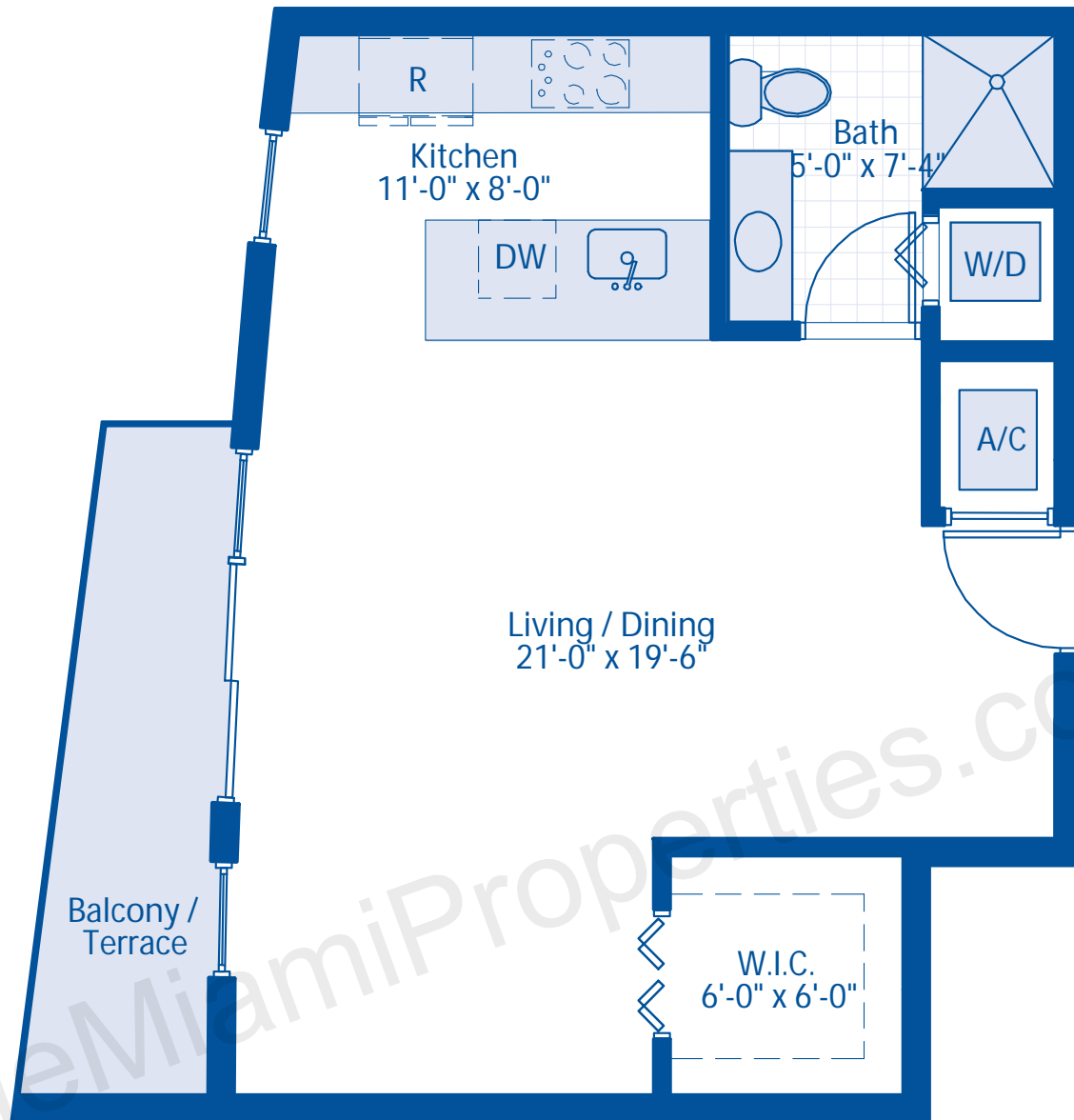
Area Under AC:	789 SF	72.8 M2
Balcony Area:	120 SF	11.1 M2
Total Area:	909 SF	84.5 M2

## 1 BEDROOM

ALL DIMENSIONS ARE APPROXIMATE AND SUBJECT TO CHANGE IN ACCORDANCE WITH THE AGREEMENT FOR SALE

**LATITUDE.**  
ON THE RIVER

The architectural plans are being provided for informational use only and without representation or warranty whatsoever. Without limiting the generality of the foregoing, any person using these plans, other than the developer and its contractor, and their respective subcontractors, shall be deemed to have acknowledged and agreed that: (a) these plans were designed solely for use by the Developer and its contractors for building construction purposes and may not be suitable for other purposes; (b) the actual improvements may differ substantially from those reflected in the plans due to "field conditions" and other factors, and independent field verification of all measurement, and the location of all mechanical, electrical, plumbing and other systems, will be necessary; (c) any measurements reflected in these plans are based on the "Architectural Method" of which in general measures the Unit to the outside finished surface of exterior walls, and the centerline of the interior demising walls, and includes portions of the adjacent Common Elements of the Condominium; (d) the exhibits to the Declaration of Condominium reflect measurements based upon the legal boundaries of the "Unit", as defined therein, which will be less than the measurements derived using the "Architectural Method" of measurement; (e) these plans shall not be deemed to constitute advertising or promotional materials; (f) the developer and the architect shall not be responsible for, and are released from, any claims arising out of the use of these plans and (g) alterations and improvements must be approved in accordance with the governing documents of the Condominium.



## UNIT D00

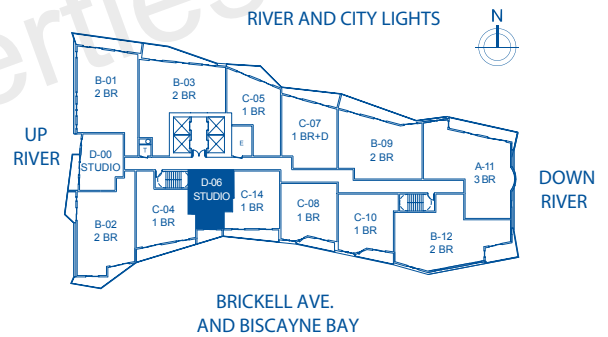
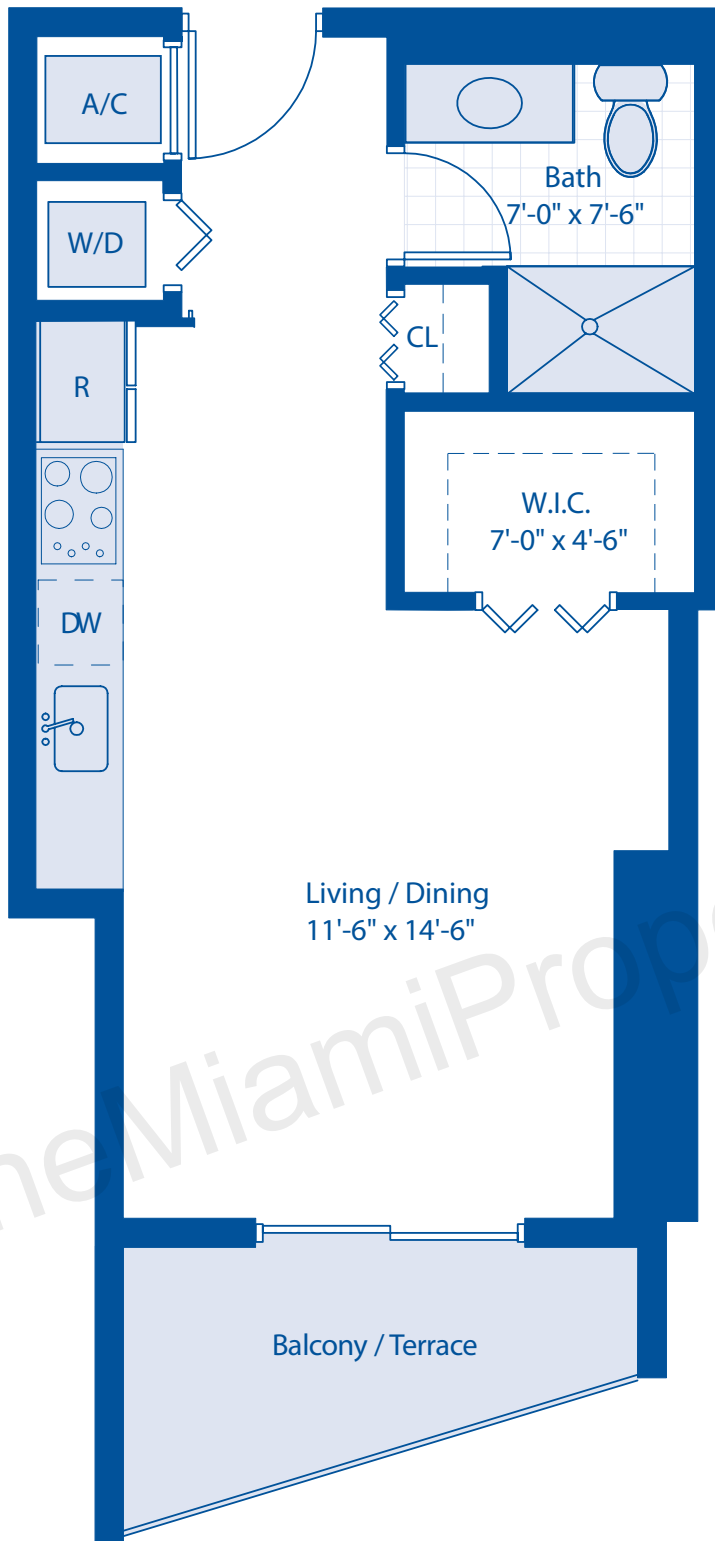
### Studio

Area Under AC:	580 SF	54.0 M2
Balcony Area:	73 SF	6.8 M2
Total Area:	653 SF	60.8 M2

**STUDIO**  
ALL DIMENSIONS ARE APPROXIMATE AND SUBJECT TO  
CHANGE IN ACCORDANCE WITH THE AGREEMENT FOR SALE

**LATITUDE.**  
ON THE RIVER

The architectural plans are being provided for informational use only and without representation or warranty whatsoever. Without limiting the generality of the foregoing, any person using these plans, other than the developer and its contractor, and their respective subcontractors, shall be deemed to have acknowledged and agreed that: (a) these plans were designed solely for use by the Developer and its contractors for building construction purposes and may not be suitable for other purposes; (b) the actual improvements may differ substantially from those reflected in the plans due to "field conditions" and other factors, and independent field verification of all measurement, and the location of all mechanical, electrical, plumbing and other systems, will be necessary; (c) any measurements reflected in these plans are based on the "Architectural Method" of which in general measures the Unit to the outside finished surface of exterior walls, and the centerline of the Interior demising walls, and includes portions of the adjacent Common Elements of the Condominium; (d) the exhibits to the Declaration of Condominium reflect measurements based upon the legal boundaries of the "Unit", as defined therein, which will be less than the measurements derived using the "Architectural Method" of measurement; (e) these plans shall not be deemed to constitute advertising or promotional materials; (f) the developer and the architect shall not be responsible for, and are released from, any claims arising out of the use of these plans and (g) alterations and improvements must be approved in accordance with the governing documents of the Condominium.



## UNIT D06

### Studio

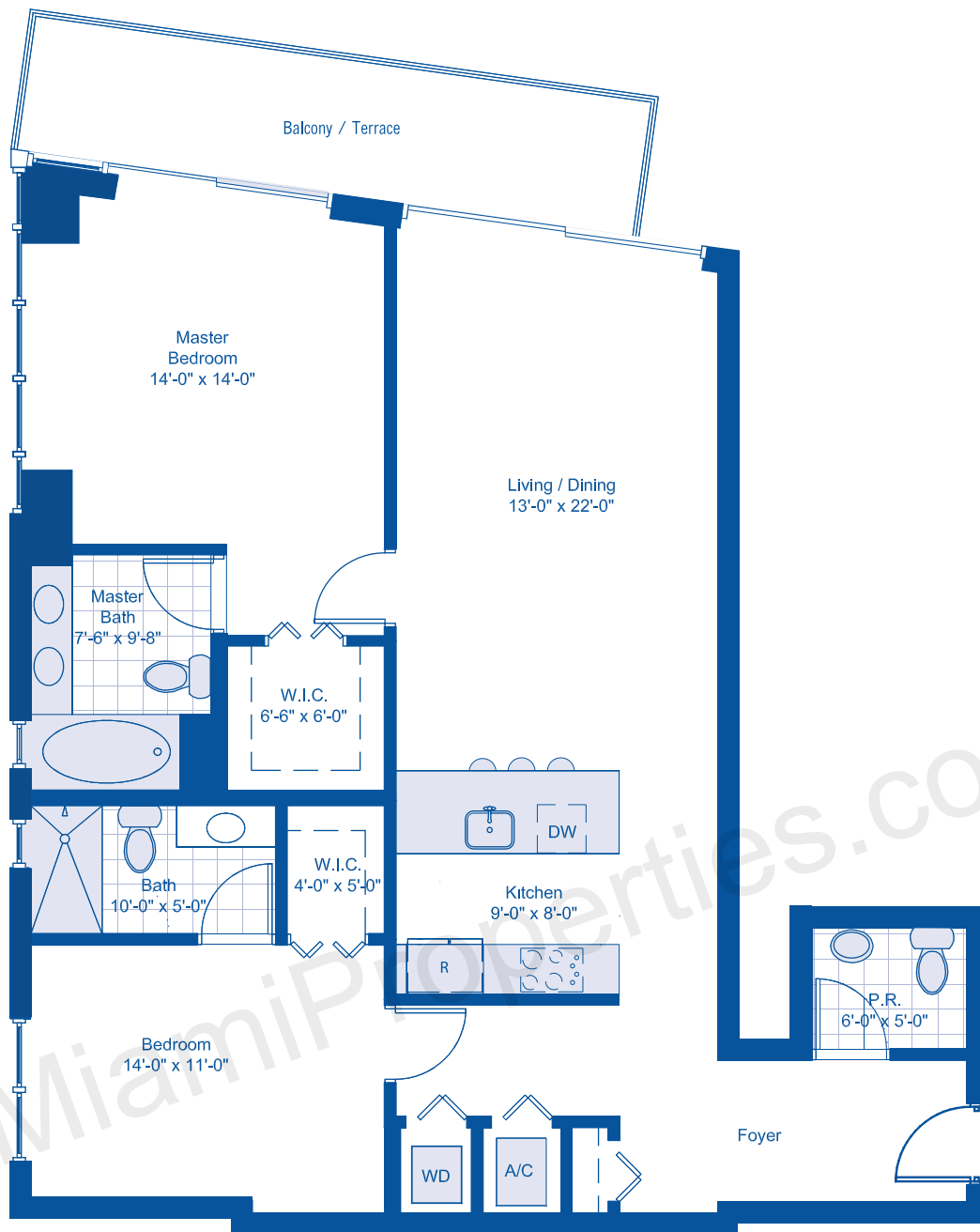
Area Under AC:	451 SF	42.0 M2
Balcony Area:	62 SF	5.8 M2
Total Area:	513 SF	47.8 M2

STUDIO

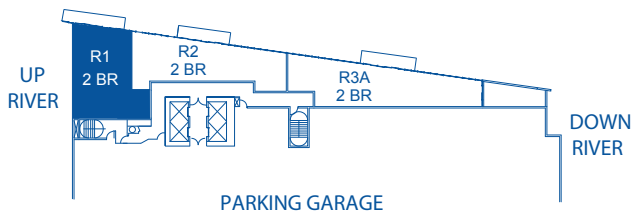
ALL DIMENSIONS ARE APPROXIMATE AND SUBJECT TO  
CHANGE IN ACCORDANCE WITH THE AGREEMENT FOR SALE

LATITUDE.  
ON THE RIVER

The architectural plans are being provided for informational use only and without representation or warranty whatsoever. Without limiting the generality of the foregoing, any person using these plans, other than the developer and its contractor, and their respective subcontractors, shall be deemed to have acknowledged and agreed that: (a) these plans were designed solely for use by the Developer and its contractors for building construction purposes and may not be suitable for other purposes; (b) the actual improvements may differ substantially from those reflected in the plans due to "field conditions" and other factors, and independent field verification of all measurement, and the location of all mechanical, electrical, plumbing and other systems, will be necessary; (c) any measurements reflected in these plans are based on the "Architectural Method" of which in general measures the Unit to the outside finished surface of exterior walls, and the centerline of the interior demising walls, and includes portions of the adjacent Common Elements of the Condominium; (d) the exhibits to the Declaration of Condominium reflect measurements based upon the legal boundaries of the "Unit", as defined therein, which will be less than the measurements derived using the "Architectural Method" of measurement; (e) these plans shall not be deemed to constitute advertising or promotional materials; (f) the developer and the architect shall not be responsible for, and are released from, any claims arising out of the use of these plans and (g) alterations and improvements must be approved in accordance with the governing documents of the Condominium.



RIVER AND CITY LIGHTS



\* Balcony Location Varies

## UNIT R1

2 Bedroom / 2.5 Bath

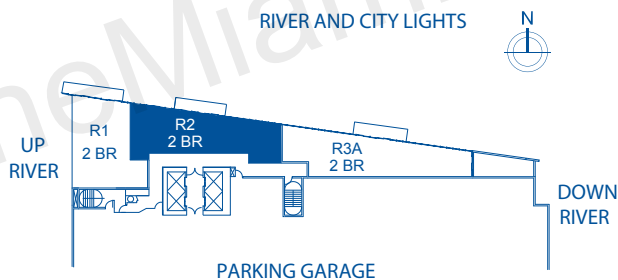
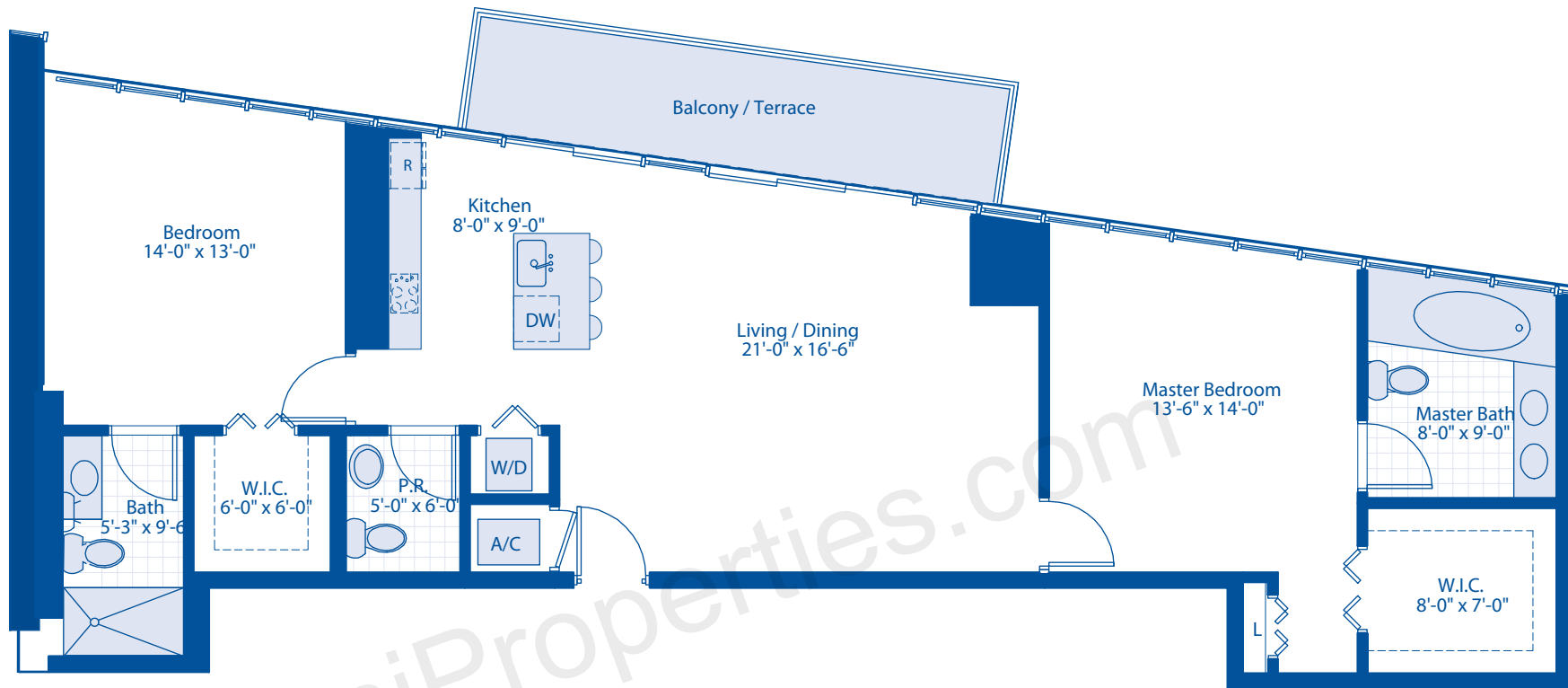
Area Under AC:	1,350 SF	122 M2
Balcony Area:	144 SF	13.4 M2
Total Area:	1,459 SF	135.4 M2

## 2 BEDROOM

ALL DIMENSIONS ARE APPROXIMATE AND SUBJECT TO CHANGE IN ACCORDANCE WITH THE AGREEMENT FOR SALE

**LATITUDE.**  
ON THE RIVER

The architectural plan shall be deemed to have been prepared in accordance with the "Architectural Method" of which in general measures the Unit to the outside finished surface of exterior walls, and the centerline of the interior demising walls, and includes portions of the adjacent Common Elements of the Condominium; (d) the exhibits to the Declaration of Condominium reflect measurements based upon the legal boundaries of the "Unit", as defined therein, which will be less than the measurements derived using the "Architectural Method" of measurement; (e) these plans shall not be deemed to constitute advertising or promotional materials; (f) the developer and the architect shall not be responsible for, and are released from, any claims arising out of the use of these plans and (g) alterations and improvements must be approved in accordance with the governing documents of the Condominium.



\* Balcony Location Varies

## UNIT R2

2 Bedroom / 2.5 Bath

Area Under AC:	1,306 SF	121 M2
Balcony Area:	130 SF	12 M2
Total Area:	1,436 SF	133 M2

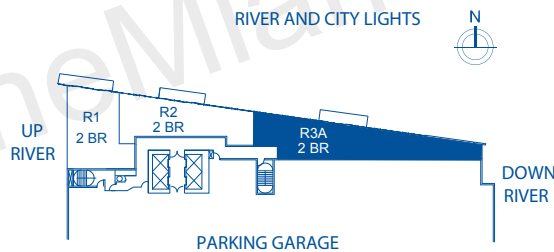
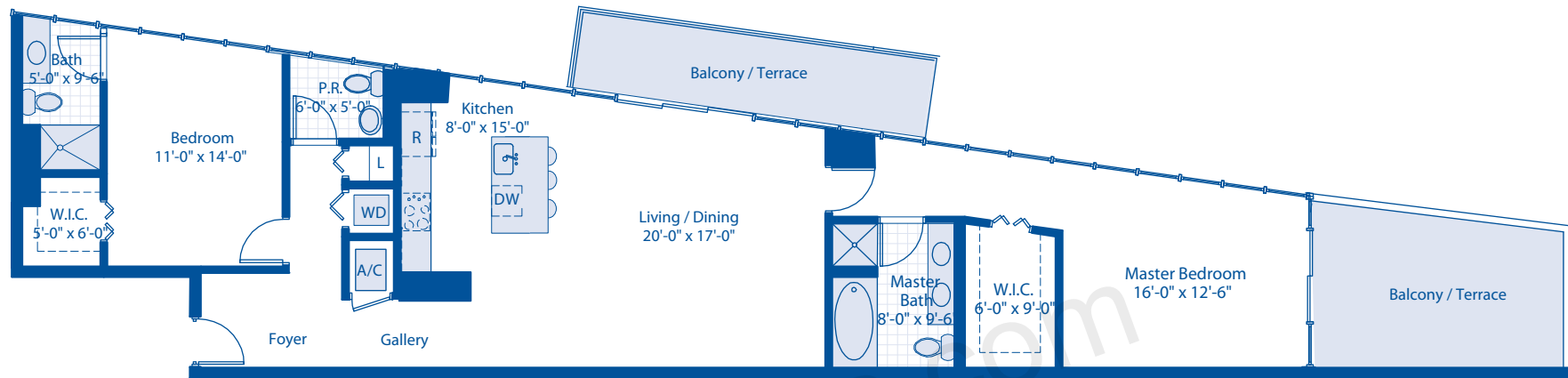
## 2 BEDROOM

ALL DIMENSIONS ARE APPROXIMATE AND SUBJECT TO  
CHANGE IN ACCORDANCE WITH THE AGREEMENT FOR SALE

**LATITUDE.**  
ON THE RIVER

The architectural plans are being provided for informational use only and without representation or warranty whatsoever. Without limiting the generality of the foregoing, any person using these plans, other than the developer and its contractor, and their respective subcontractors, shall be deemed to have acknowledged and agreed that; (a) these plans were designed solely for use by the Developer and its contractors for building construction purposes and may not be suitable for other purposes; (b) the actual improvements may differ substantially from those reflected in the plans due to "field conditions" and other factors, and independent field verification of all measurement, and the location of all mechanical, electrical, plumbing and other systems, will be necessary; (c) any measurements reflected in these plans are based on the "Architectural Method" of which in general measures the Unit to the outside finished surface of exterior walls, and the centerline of the interior demising walls, and includes portions of the adjacent Common Elements of the Condominium; (d) the exhibits to the Declaration of Condominium reflect measurements based upon the legal boundaries of the "Unit", as defined therein, which will be less than the measurements derived using the "Architectural Method" of measurement; (e) these plans shall not be deemed to constitute advertising or promotional materials; (f) the developer and the architect shall not be responsible for, and are released from, any claims arising out of the use of these plans and (g) alterations and improvements must be approved in accordance with the governing documents of the Condominium.





\* Balcony Location Varies

## UNIT R3A

2 Bedroom / 2.5 Bath

Area Under AC:	1,481 SF	138 M2
Balcony Area:	272 SF	25 M2
Total Area:	1,753 SF	163 M2

## 2 BEDROOM

ALL DIMENSIONS ARE APPROXIMATE AND SUBJECT TO  
CHANGE IN ACCORDANCE WITH THE AGREEMENT FOR SALE

**LATITUDE.**  
ON THE RIVER

The architectural plans are being provided for informational use only and without representation or warranty whatsoever. Without limiting the generality of the foregoing, any person using these plans, other than the developer and its contractor, and their respective subcontractors, shall be deemed to have acknowledged and agreed that: (a) these plans were designed solely for use by the Developer and its contractors for building construction purposes and may not be suitable for other purposes; (b) the actual improvements may differ substantially from those reflected in the plans due to "field conditions" and other factors, and independent field verification of all measurement, and the location of all mechanical, electrical, plumbing and other systems, will be necessary; (c) any measurements reflected in these plans are based on the "Architectural Method" of which in general measures the Unit to the outside finished surface of exterior walls, and the centerline of the interior demising walls, and includes portions of the adjacent Common Elements of the Condominium; (d) the exhibits to the Declaration of Condominium reflect measurements based upon the legal boundaries of the "Unit", as defined therein, which will be less than the measurements derived using the "Architectural Method" of measurement; (e) these plans shall not be deemed to constitute advertising or promotional materials; (f) the developer and the architect shall not be responsible for, and are released from, any claims arising out of the use of these plans and (g) alterations and improvements must be approved in accordance with the governing documents of the Condominium.