

# BRICKELLTEN

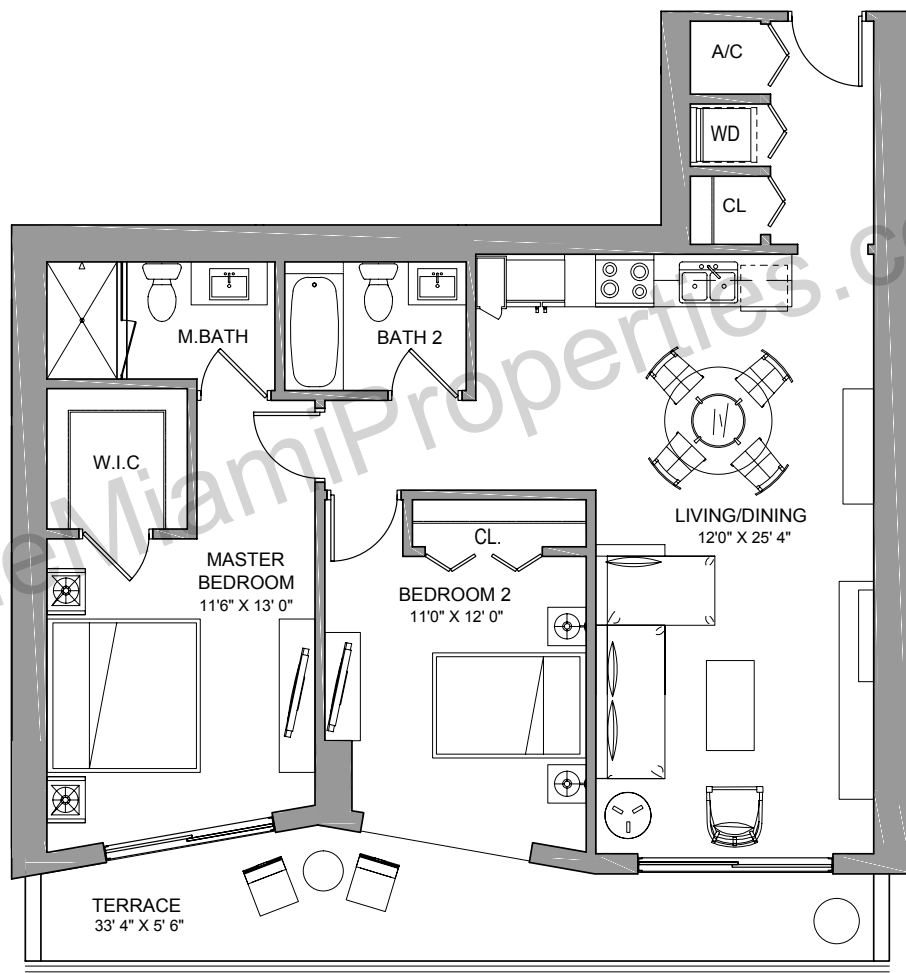
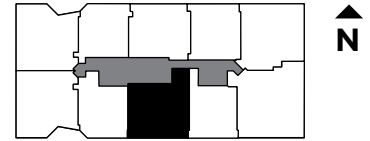
## RESIDENCE ONE

2 BEDROOMS / 2 BATH

INTERIOR..... 1,064 sq ft 99 m<sup>2</sup>

TERRACE..... 186 sq ft 17 m<sup>2</sup>

**TOTAL** **1,250 sq ft 116 m<sup>2</sup>**



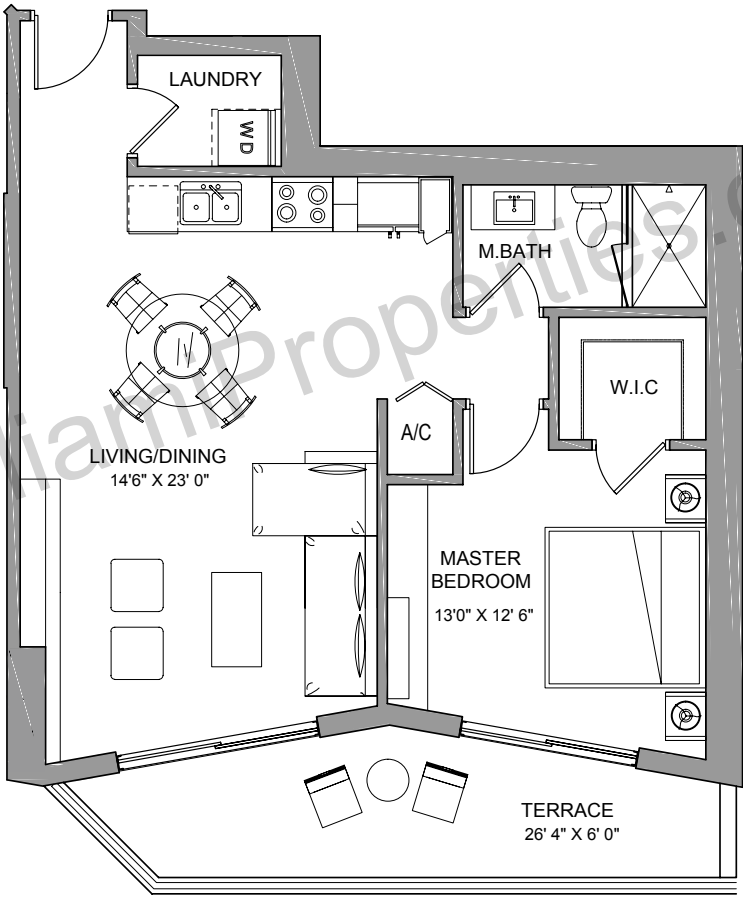
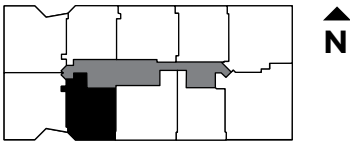
SALES AND MARKETING BY  
**ONEWORLD**  
PROPERTIES



These drawings are conceptual only and are for the convenience of reference. They should not be relied upon as representations, express or implied, of the final detail of the residences. Units shown are examples of unit types and may not depict actual units. Stated square footages are ranges for a particular unit type and are measured to the exterior boundaries of the exterior walls and the centerline of interior demising walls and in fact vary from the area that would be determined by using the description and definition of the "Unit" set forth in the Declaration (which generally only includes the interior airspace between the perimeter walls and excludes interior structural components).

RESIDENCE TEN  
1 BEDROOM / 1 BATH

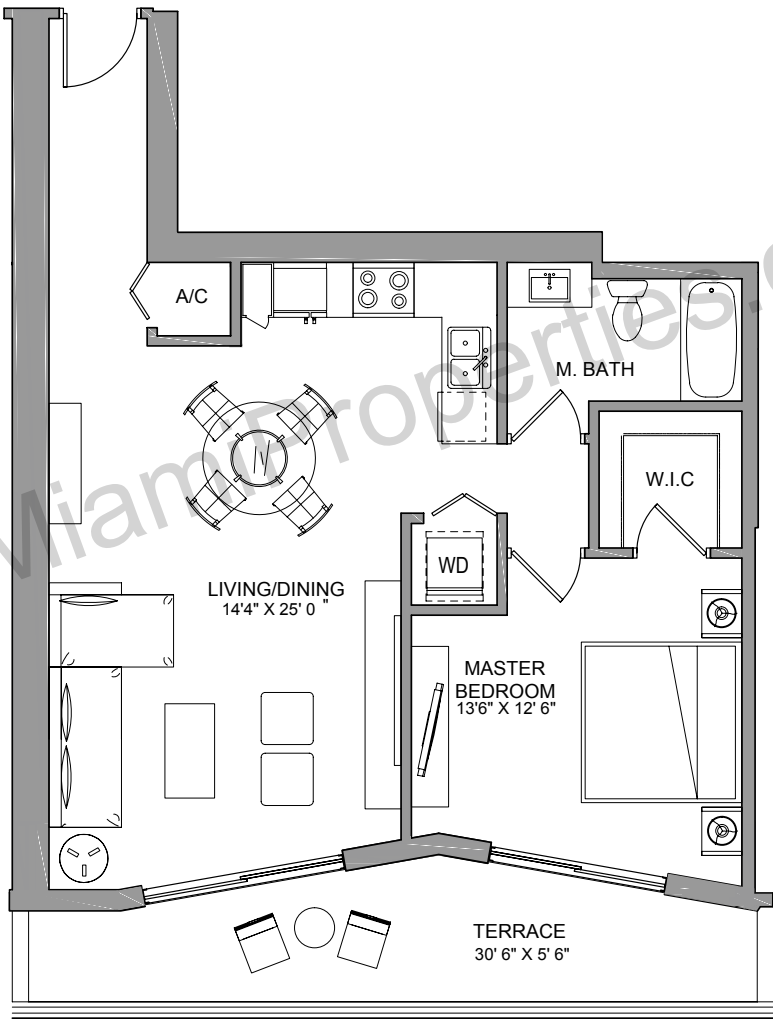
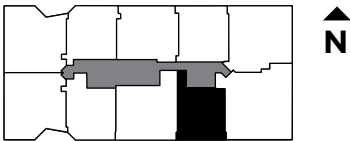
INTERIOR.....	768 sq ft	71 m <sup>2</sup>
TERRACE.....	150 sq ft	14 m <sup>2</sup>
<hr/>		
TOTAL	918 sq ft	85 m <sup>2</sup>



SALES AND MARKETING BY  
**ONEWORLD**  
PROPERTIES

RESIDENCE TWO  
1 BEDROOM / 1 BATH

INTERIOR.....	815 sq ft	76 m <sup>2</sup>
TERRACE.....	165 sq ft	15 m <sup>2</sup>
<hr/>		
TOTAL	980 sq ft	91 m <sup>2</sup>



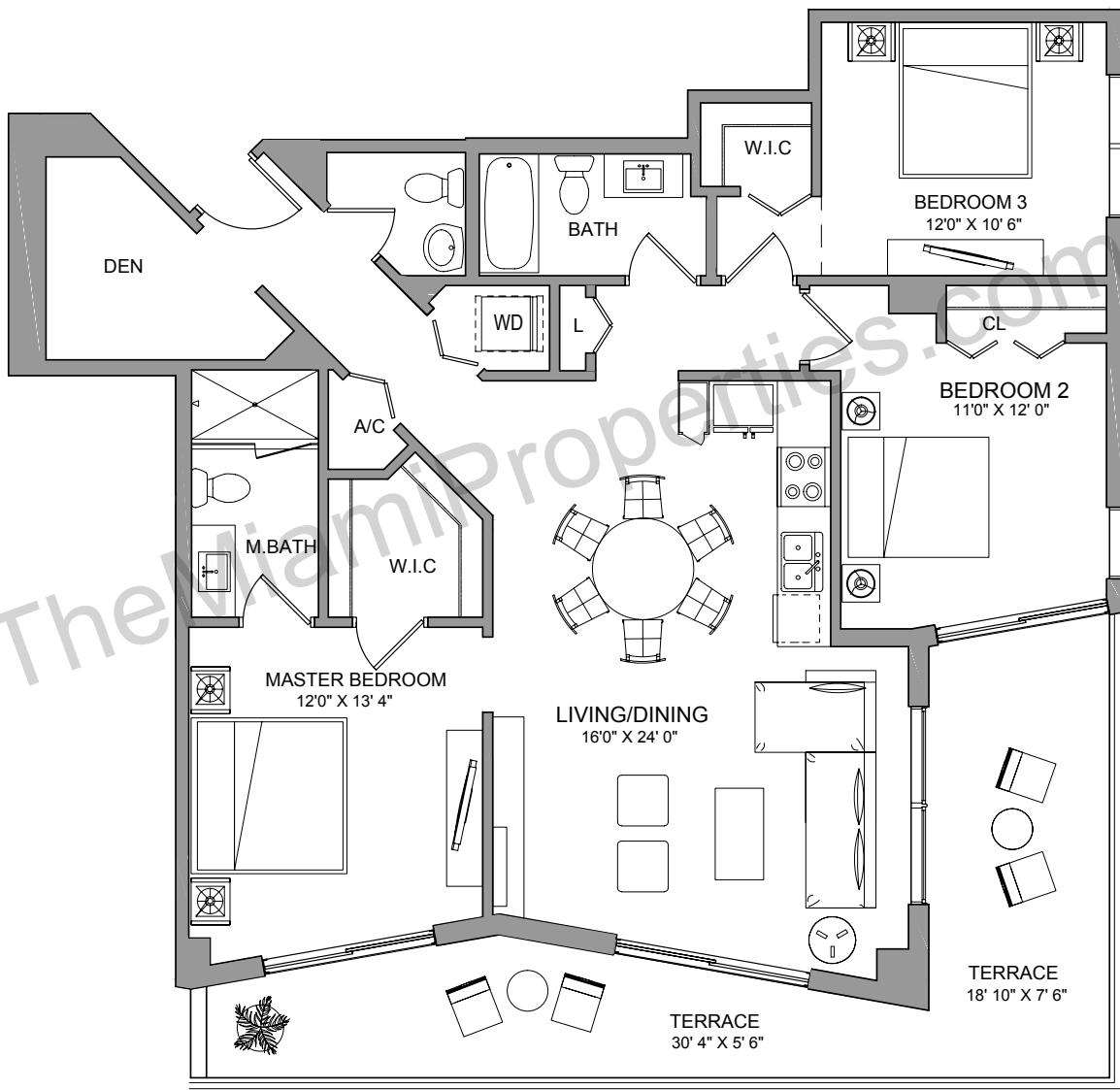
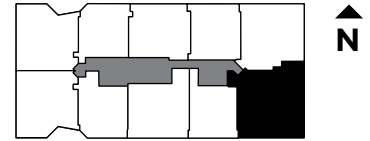
SALES AND MARKETING BY  
**ONEWORLD**  
PROPERTIES

## RESIDENCE THREE

3 BEDROOMS + DEN / 2 1/2 BATH

INTERIOR..... 1,387 sq ft 129 m<sup>2</sup>  
TERRACE..... 328 sq ft 31 m<sup>2</sup>

**TOTAL** **1,715 sq ft 160 m<sup>2</sup>**

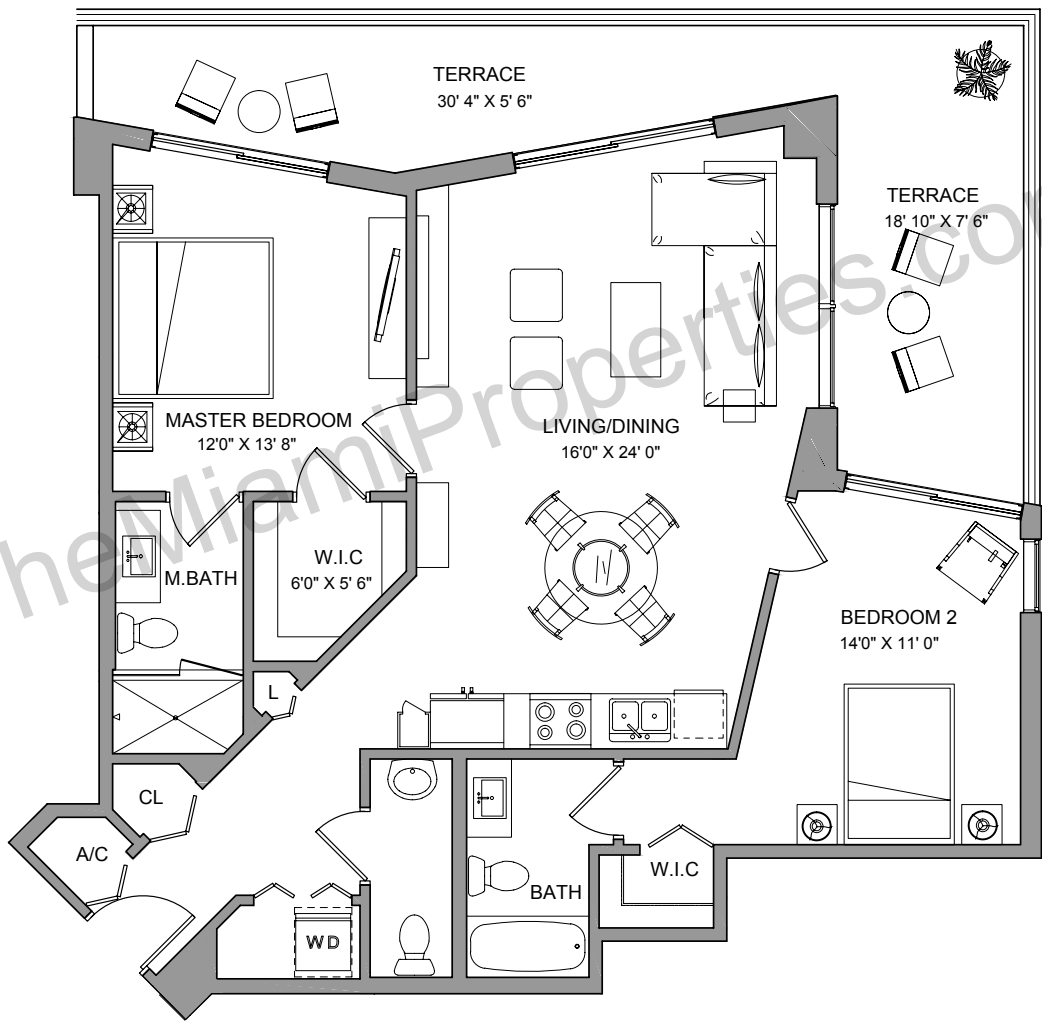
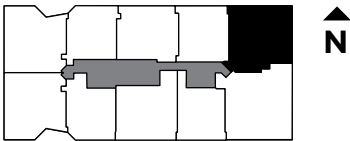


SALES AND MARKETING BY  
**ONEWORLD**  
PROPERTIES

RESIDENCE FOUR

2 BEDROOMS / 2 1/2 BATH

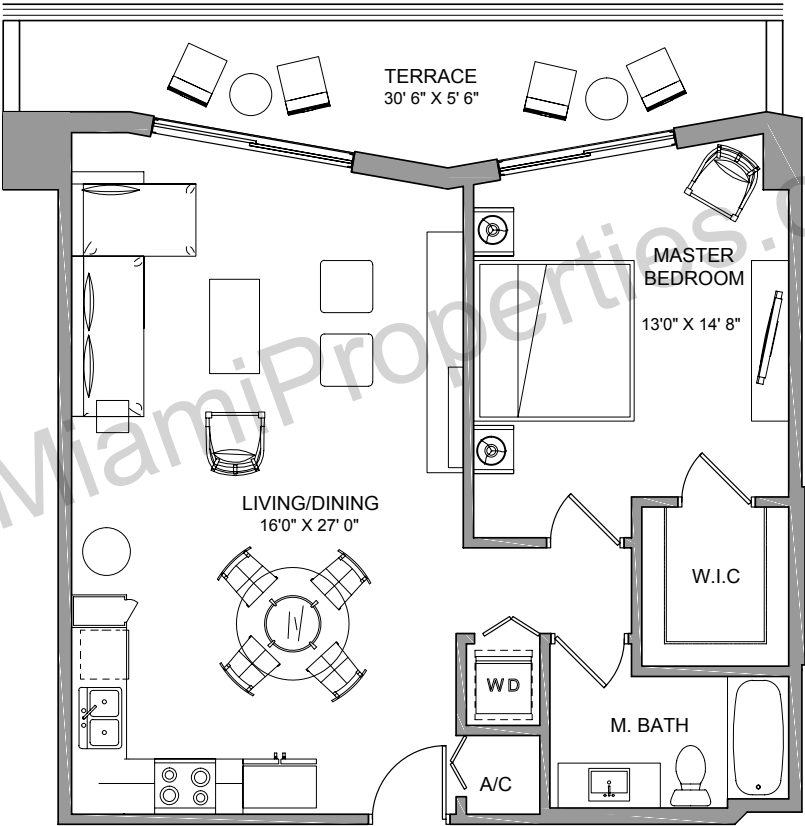
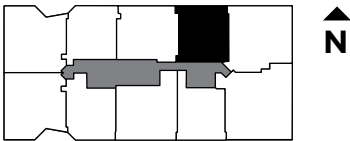
INTERIOR.....	1,124 sq ft	105 m <sup>2</sup>
TERRACE.....	328 sq ft	31 m <sup>2</sup>
<hr/>		
TOTAL	1,452 sq ft	136 m <sup>2</sup>



SALES AND MARKETING BY  
**ONEWORLD**  
PROPERTIES

RESIDENCE FIVE  
1 BEDROOM / 1 BATH

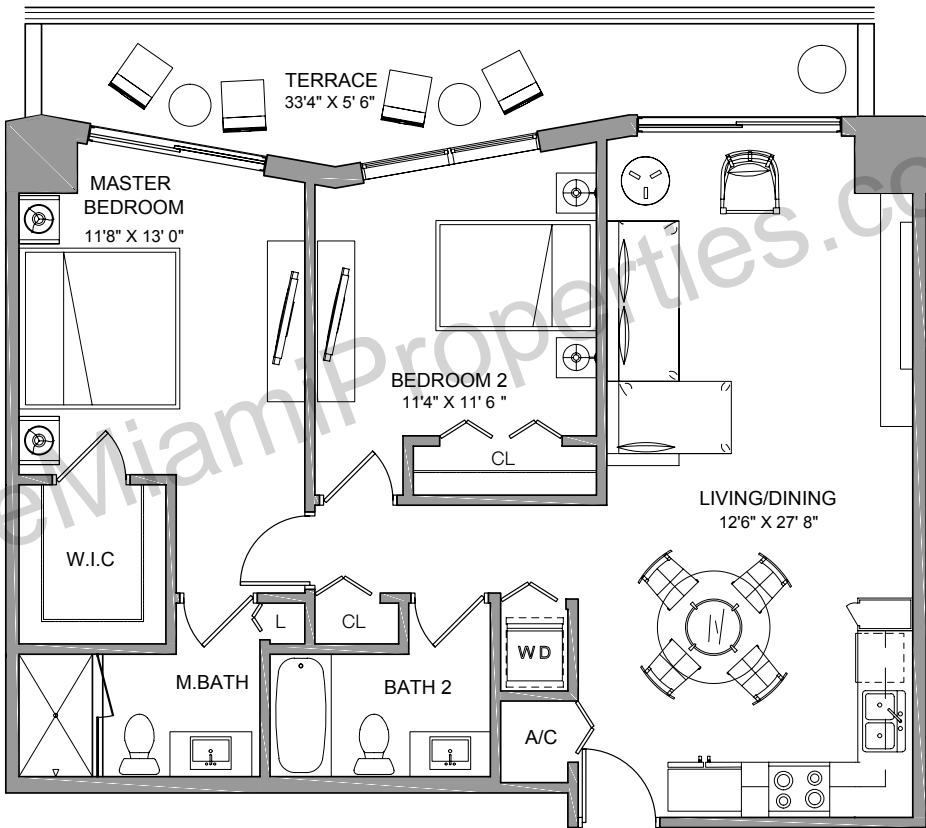
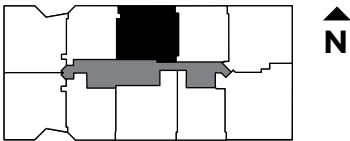
INTERIOR.....	827 sq ft	77 m <sup>2</sup>
TERRACE.....	169 sq ft	16 m <sup>2</sup>
<hr/>		
TOTAL	996 sq ft	93 m <sup>2</sup>



SALES AND MARKETING BY  
**ONEWORLD**  
PROPERTIES

RESIDENCE SIX  
2 BEDROOMS / 2 BATH

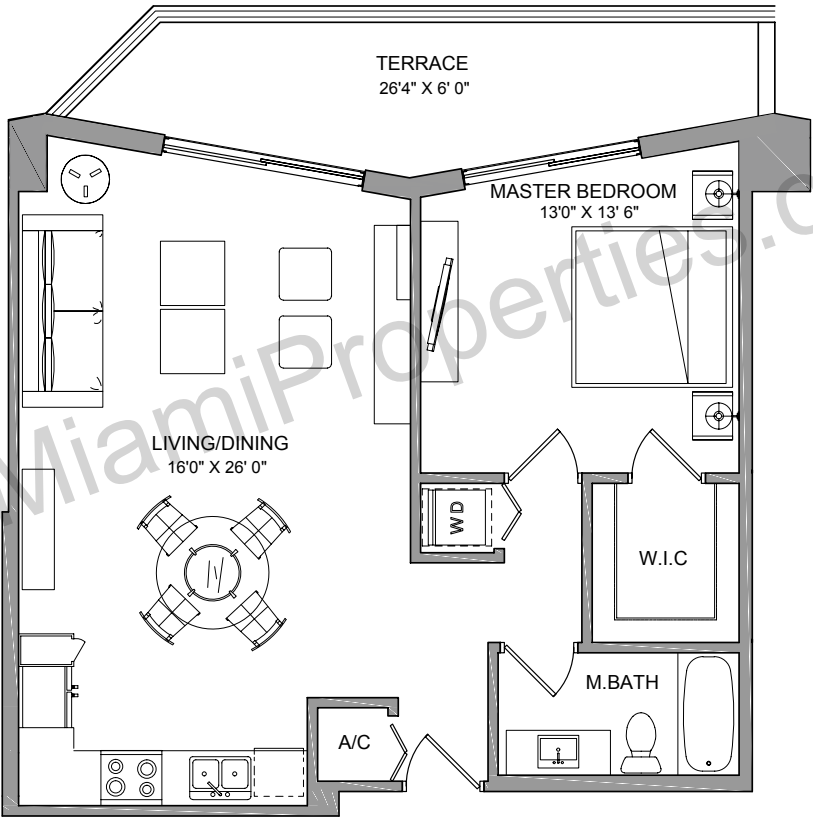
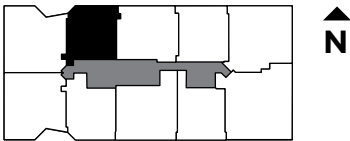
INTERIOR.....	1,009 sq ft	94 m <sup>2</sup>
TERRACE.....	177 sq ft	16 m <sup>2</sup>
<hr/>		
TOTAL	1,186 sq ft	110 m <sup>2</sup>



SALES AND MARKETING BY  
**ONEWORLD**  
PROPERTIES

RESIDENCE SEVEN  
1 BEDROOM / 1 BATH

INTERIOR.....	792 sq ft	74 m <sup>2</sup>
TERRACE.....	167 sq ft	16 m <sup>2</sup>
<hr/>		
TOTAL	959 sq ft	90 m <sup>2</sup>



SALES AND MARKETING BY  
**ONEWORLD**  
PROPERTIES

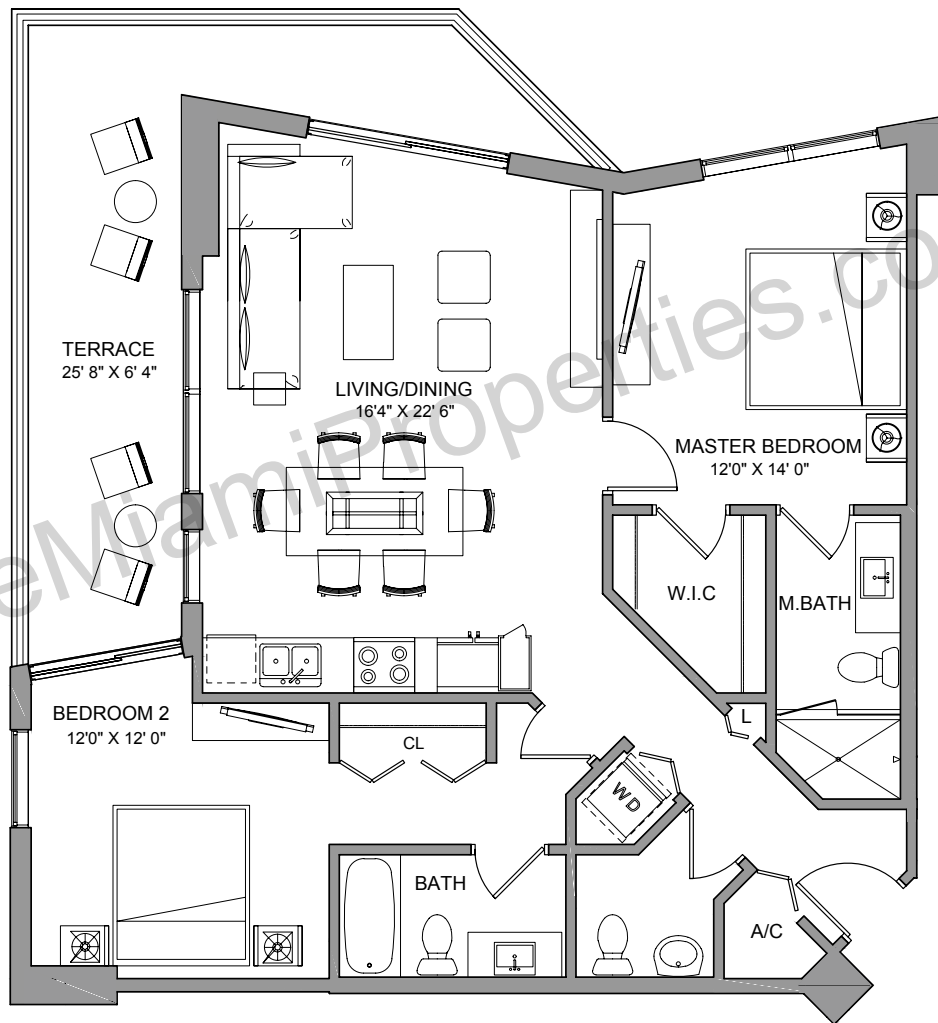
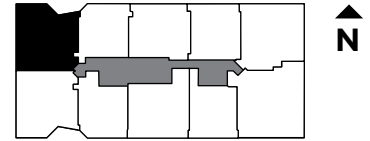


## RESIDENCE EIGHT

2 BEDROOMS / 2 1/2 BATH

INTERIOR..... 1,111 sq ft 103 m<sup>2</sup>  
TERRACE..... 254 sq ft 24 m<sup>2</sup>

**TOTAL** **1,365 sq ft 127 m<sup>2</sup>**



SALES AND MARKETING BY  
**ONEWORLD**  
PROPERTIES



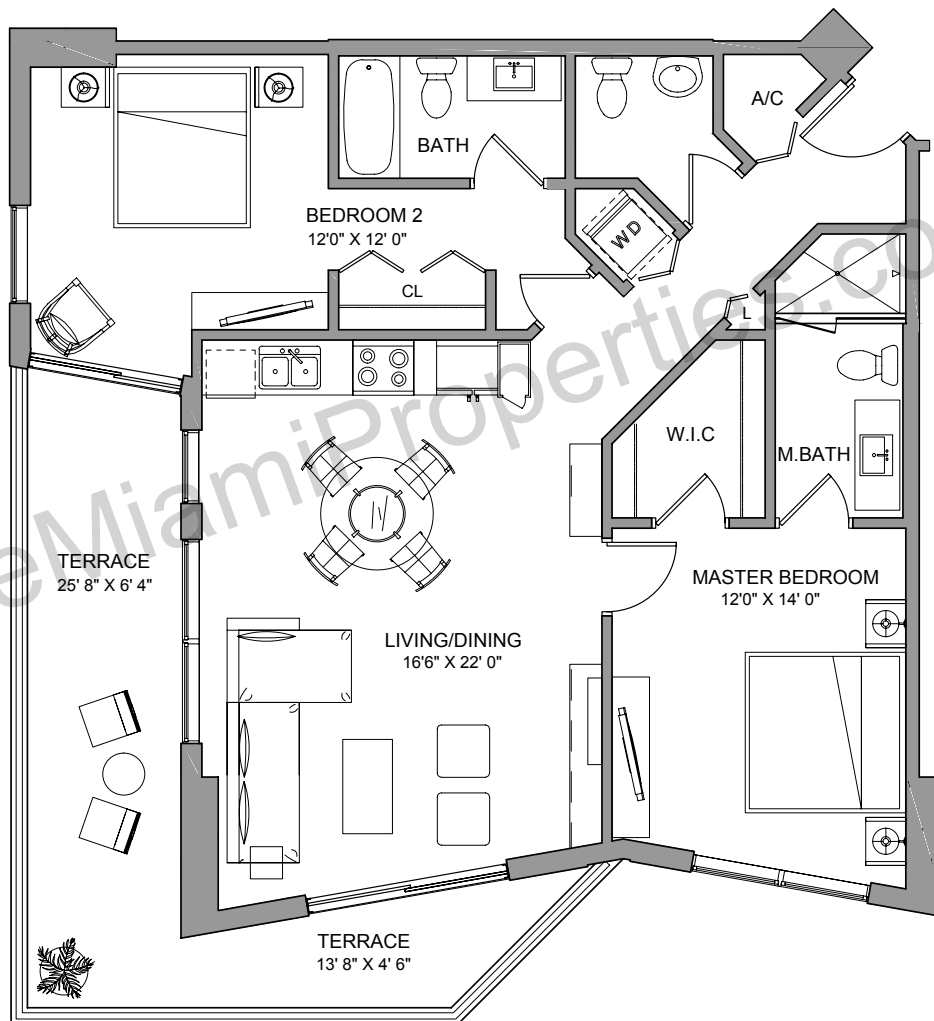
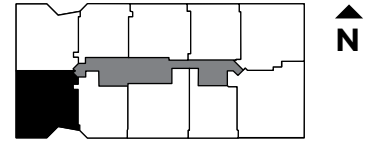
These drawings are conceptual only and are for the convenience of reference. They should not be relied upon as representations, express or implied, of the final detail of the residences. Units shown are examples of unit types and may not depict actual units. Stated square footages are ranges for a particular unit type and are measured to the exterior boundaries of the exterior walls and the centerline of interior demising walls and in fact vary from the area that would be determined by using the description and definition of the "Unit" set forth in the Declaration (which generally only includes the interior airspace between the perimeter walls and excludes interior structural components).

## RESIDENCE NINE

2 BEDROOMS / 2 1/2 BATH

INTERIOR..... 1,116 sq ft 104 m<sup>2</sup>  
TERRACE..... 254 sq ft 24 m<sup>2</sup>

**TOTAL** **1,370 sq ft 128 m<sup>2</sup>**



SALES AND MARKETING BY  
**ONEWORLD**  
PROPERTIES



These drawings are conceptual only and are for the convenience of reference. They should not be relied upon as representations, express or implied, of the final detail of the residences. Units shown are examples of unit types and may not depict actual units. Stated square footages are ranges for a particular unit type and are measured to the exterior boundaries of the exterior walls and the centerline of interior demising walls and in fact vary from the area that would be determined by using the description and definition of the "Unit" set forth in the Declaration (which generally only includes the interior airspace between the perimeter walls and excludes interior structural components).