

# BH02

BRICKELL HEIGHTS  
DESIGNER RESIDENCES



IT'S NOT FITNESS. IT'S LIFE.



05 REASONS TO LOVE  
**BH02**  
BRICKELL HEIGHTS

**01. VISIONARY DEVELOPMENT  
BY THE RELATED GROUP**

Designed with genius and elevated with elite amenities, BH02 is the latest development from the visionary mind of Jorge Pérez, Chariman & CEO of The Related Group in collaboration with Crescent Heights.

**02. EQUINOX & SOUL CYCLE:  
FITNESS JUST GOT MORE FUN**

Health and wellbeing take a sexy, high-performance turn at Equinox and Soul Cycle. Renowned for exceptional contemporary design and impeccable attention to detail, Equinox caters to inner and outer beauty with innovative fitness programs. Soul Cycle's state-of-the-art 3,500 square foot music infused spin studio brings inspired SoulCycle® Method classes to Miami for the first time.

**03. INSPIRED DAYS & NIGHTS IN BRICKELL**

The white-hot center of Miami has moved to Brickell and BH02 puts residents steps from the all-day all-night excitement in a sophisticated mixed-use property with condominiums, retail space, restaurant, the Equinox Fitness Center & Spa, and Soul Cycle. Brickell City Centre's ultra-luxe 5 million square foot shopping, dining, hotel, office and entertainment destination and South Miami Avenue's chic restaurants and boutiques make everyday life deliciously satisfying.

**04. PRESTIGIOUS PRIVILEGED LIFESTYLE**

Life inside Brickell's most brilliantly designed new condominium tower caters to the everyday needs and extraordinary pleasure of residents who expect only the best in life. From personalized services to chic amenities, BH02 takes life in Brickell to the next level.

**05. REVOLUTIONARY DESIGN  
BY ROCKWELL GROUP & ARQUITECTONICA**

With a seamless synergy of technology and craftsmanship, award-winning architect David Rockwell and internationally renowned Arquitectonica bring contemporary glamour throughout BH02's extraordinary tower and amenity spaces.

OBTAIN THE PROPERTY REPORT REQUIRED BY THE FEDERAL LAW AND READ IT BEFORE SIGNING ANYTHING. NO FEDERAL AGENCY HAS JUDGED THE MERITS OR VALUE, IF ANY, OF THIS PROPERTY.

ORAL REPRESENTATIONS CANNOT BE RELIED UPON AS CORRECTLY STATING THE REPRESENTATIONS OF THE DEVELOPER. FOR CORRECT REPRESENTATIONS, MAKE REFERENCE TO THIS BROCHURE AND TO THE DOCUMENTS REQUIRED BY SECTION 718.503, FLORIDA STATUTES, TO BE FURNISHED BY A DEVELOPER TO A BUYER OR LESSEE.





“A SOPHISTICATED  
FUSION OF  
BRILLIANT DESIGN,  
UNPARALLELED SERVICES,  
A FANTASTIC **EQUINOX** AND  
THE FIRST **SOULCYCLE**  
IN THE HEART OF BRICKELL  
—  
THIS IS BH02”

**JORGE M. PEREZ**

 **RELATED**





FOR THOSE LIVING IN ACTION

**BH02**  
BRICKELL HEIGHTS



**IN THE HEART OF MIAMI**

**MIAMI HAS NEVER BEEN HOTTER, MORE GLAMOROUS, OR MORE EXCITING THAN IT IS TODAY AND BRICKELL IS AT THE CENTER OF IT ALL. FROM ULTRA-LUXE BOUTIQUES AND ACCLAIMED RESTAURANTS TO PRESTIGIOUS CORPORATE OFFICE TOWERS AND PREMIER ENTERTAINMENT VENUES, BRICKELL OFFERS THE ULTIMATE URBAN LIFESTYLE.**

**WITH STATIONS THROUGHOUT DOWNTOWN MIAMI, METROMOVER ENABLES PEOPLE TO EASILY REACH KEY DESTINATIONS THROUGHOUT THE CITY, INCLUDING AMERICAN AIRLINES ARENA, BAYSIDE MARKET PLACE, MUSEUM PARK, THE ADRIENNE ARSHT CENTER FOR THE PERFORMING ARTS, AND THE MIAMI INTERNATIONAL AIRPORT.**

**SOUTH MIAMI AVENUE**



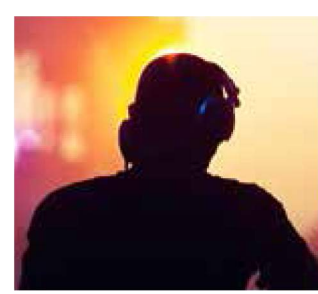
Alongside BH02, South Miami Avenue offers a visual feast of art-infused destinations for fine dining, premiere shopping, and chic entertainment. The vibrant ambiance continues from sunup to sundown and all through the night.



**ENTERTAINMENT & SPORTING EVENT VENUES**

Designed by Arquitectonica and 360 Architecture, the nearby American Airlines Arena is among the top sports and entertainment arenas in the United States. In addition to being the home of the NBA's Miami Heat, it also features internationally renowned musicians and singers all year round.

Soon, Resorts World Miami will bring a dynamic mix of luxury residential, hospitality, retail, dining, and entertainment destinations to the Biscayne Bay waterfront. A landscaped waterfront promenade will connect to major cultural institutions, including Museum Park and the Adrienne Arsht Center for the Performing Arts.



**PREMIERE SHOPPING AND FINE DINING AT YOUR DOORSTEP**

From Mary Brickell Village to South Miami Avenue and the upcoming Brickell City Centre, which is being developed in partnership with Bal Harbour Shops, Miami is a shopper's paradise. Throughout Brickell, and within a two-mile radius of BH02, over 40 top culinary destinations, including the hottest celebrity chef restaurants, create a vibrant lifestyle.



**ART & DESIGN**




Downtown Miami is home to the city's top museums, including The Patricia and Phillip Frost Museum of Science, Vizcaya Museum & Gardens, and the Pérez Art Museum Miami (PAMM) in Museum Park. Art and design aficionados will also enjoy convenient access to the Miami Design District's eclectic array of design stores, fashion boutiques, and art galleries, and Wynwood's infamous open-air street-art installations, cafés, and bars.

**PERFORMING ARTS**

Designed by internationally renowned architect Cesar Pelli, the Adrienne Arsht Center for the Performing Arts hosts jazz, theater, opera, children's shows, comedy and contemporary dance, and is home to the List Art Collection, which includes an exceptional collection of 20th century masterpieces. Just a few minutes away in South Beach at the Frank Gehry-designed New World Center, New World Symphony is an internationally acclaimed orchestral academy established under the artistic direction of conductor Michael Tilson Thomas.





A long-exposure photograph of a city street at night. The scene is filled with colorful light trails from cars and streetlights, creating a sense of motion and energy. In the background, several modern skyscrapers are illuminated, with one prominent tower on the right featuring a curved facade and glowing balconies. The sky is a deep, dark blue. In the foreground, a silver sports car is parked on the right, and a man in a suit and a woman in a black dress are walking on the sidewalk. The overall atmosphere is one of a bustling, modern urban environment.

FIND THE LIFE  
OF YOUR  
DREAMS  
IN THE TOWER  
YOU'LL LOVE



SOME JUST WANT TO GO HIGHER



IT'S NOT FITNESS. IT'S LIFE.



From its provocative "Equinox Made Me Do It" campaign featuring cheeky one-liners and bold, fashion-influenced photography to inspired workout environments that feel more like a sleek, sophisticated 5-star hotel than a fitness club, Equinox has redefined the workout experience for a new generation. In addition to cutting-edge equipment, innovative classes, and an elite cadre of personal trainers, Equinox members enjoy full-service spas, healthy gourmet cafes, and upscale, stylish clothing boutiques. WiFi lets you stream your favorite music while you work out or connect to the Equinox app, which helps you maximize and personalize every minute of your fitness lifestyle. Designed to pamper from beginning to end, large and lavish men and women's changing rooms equipped with complimentary Kiehl's products have you looking

and feeling amazing when your workout is done. With inspirational instructors, candlelight, epic spaces, and rocking music, Soul Cycle has reinvented indoor cycling as a workout regime that will change your body as much as it will change your life. Forty-five minute classes led by world-class instructors engage and empower riders in a way that leaves them mentally and physically stronger than when they arrived. Studios are equipped with SoulCycle Bikes, indoor cycles designed specifically for the SoulCycle ride, and classes incorporate fat-burning cardio and a full-body workout with hand weights to work your core. The Soul Cycle website lets you browse class styles including Soul Survivor and Soul Warrior, check out instructors to find the right fit, and download the tunes they play in their sessions.





EQUINOX



YOUR VIEWS





**EQUINOX AT YOUR FINGERTIPS**



The most stylish fitness club in the world is just one elevator ride away at BH02. With high-performance fitness programs, innovative personal trainers, expert nutritionists, and pampering spa treatments all at your fingertips, achieving your physical peak is easier than ever. With unprecedented service and beautifully luxurious design, the Equinox experience is pure pleasure.

**MIAMI'S FIRST SOUL CYCLE**

SoulCycle, the state-of-the-art workout studio that revolutionized indoor riding, will open its first Brickell location at BH02. Inside the music-infused, 3,500 square foot studio the country's best instructors and staff deliver unique services and personalized attention.



**UN-COMMON AMENITY SPACES**



Residents of BH02 enjoy exclusive access to an exceptional array of social, fitness, business, and recreational amenities. From the dramatic lobby to two breathtaking private pool terraces, BH02 offers a contemporary take on urban glamour tailored to the Miami lifestyle.



**ARRIVE IN STYLE**

Designed by award-winning architect David Rockwell, the double height, glass-wall lobby offers a dramatic arrival experience to residents and guests. With valet parking and BH02's concierge, personalized service is at hand day and night.



**VEGETABLE GARDENS BY DYLAN TERRY**

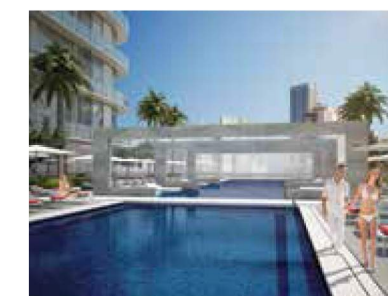


BH02's sustainable community garden, designed by seed-to-table pioneer Dylan Terry as an edible work of art, brings the finest herbs and vegetables to your doorstep. Dylan has designed for restaurants, including the Mandolin, Essensia, The Dome, and The Broken Shaker, high-profile clients, including the Vizcaya Museum & Gardens, Arquitectonica, and the Miami Children's Hospital, as well as many schools and private homes.



**HIGH-STYLE PRIVATE RESORT**

BH02's mezzanine pool terrace has been designed as a stylish resort-style destination where you can take in the sun or relax in the shade above the hustle of the city streets. Get even higher and enjoy views of the skyline and the Atlantic Ocean from the private rooftop pool and amenity terrace.





YOUR ROOFTOP POOL







ACADEMY AWARDS KODAK THEATRE



AMES HOTEL



W HOTEL UN ON SQUARE

# MAKING DREAMS INTO SPACES

Founded by David Rockwell in 1984, Rockwell Group is a 150-person award winning, cross-disciplinary architecture and design practice based in New York City

## DAVID ROCKWELL

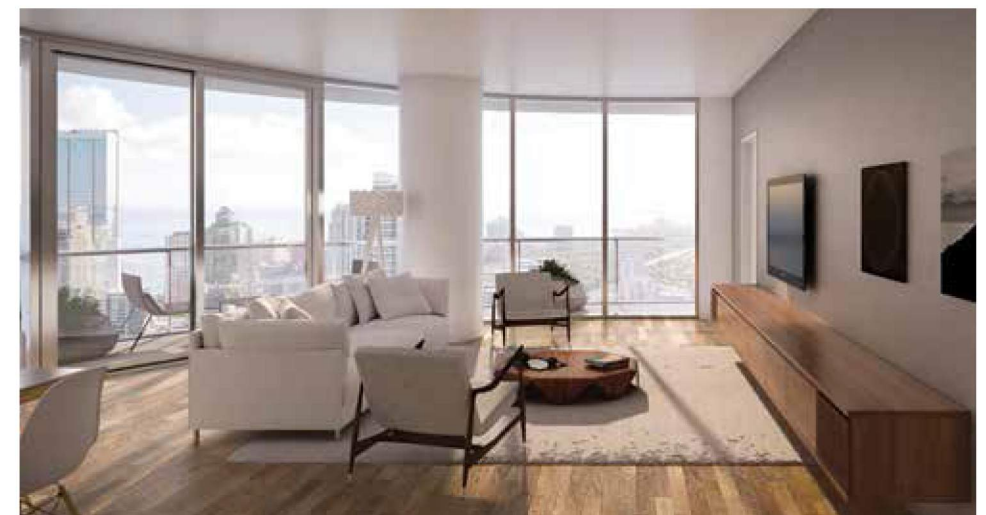
with satellite offices in Madrid and Shanghai. Inspired by theater, technology, and high-end craft, the firm creates a unique narrative for each project, ranging from

restaurants, hotels, airport terminals, and hospitals, to festivals, museum exhibitions, and Broadway sets. David's work has been acclaimed by internationally renowned museums, professional organizations, and design authorities including the Smithsonian's Cooper-Hewitt National Design Museum, the James Beard Foundation, Interior Design magazine, and Architectural Digest. Fast Company named Rockwell Group one of the most innovative design practices in their annual World's 50 Most Innovative Companies issue.





Soaring ceilings and glass walls accentuate the natural light of Miami and surround every residence with dramatic views. Sleek contemporary interiors open to private balconies that offer a glamorous setting for relaxing through the day or entertaining guests in the lights of the nighttime skyline.





FOR MORE INFORMATION

[www.themiamiproperties.com](http://www.themiamiproperties.com)

1-866-477-7778

[info@themiamiproperties.com](mailto:info@themiamiproperties.com)



THE MIAMI PROPERTIES



Download on the  
**App Store**